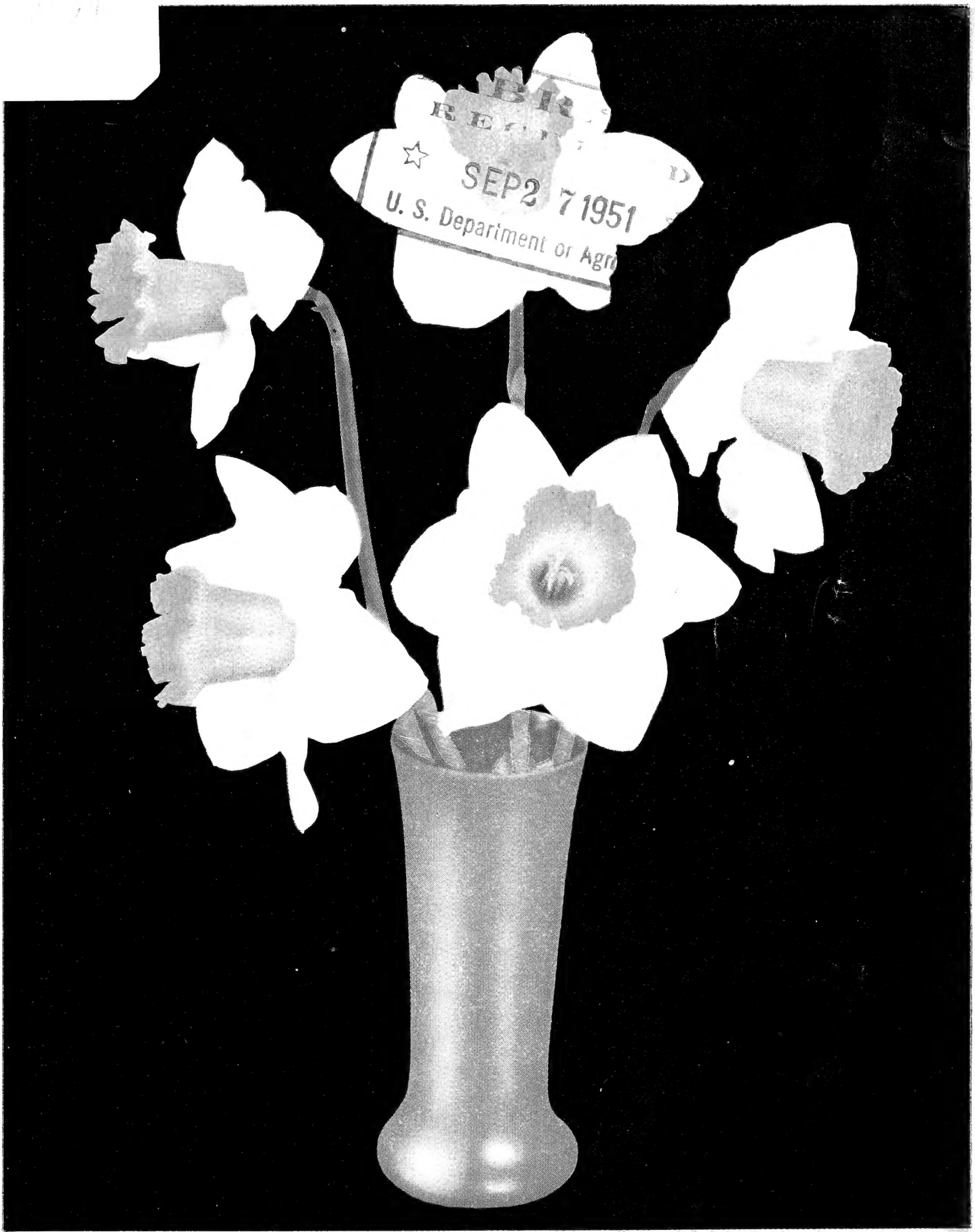


## **Historic, Archive Document**

Do not assume content reflects current scientific knowledge, policies, or practices.





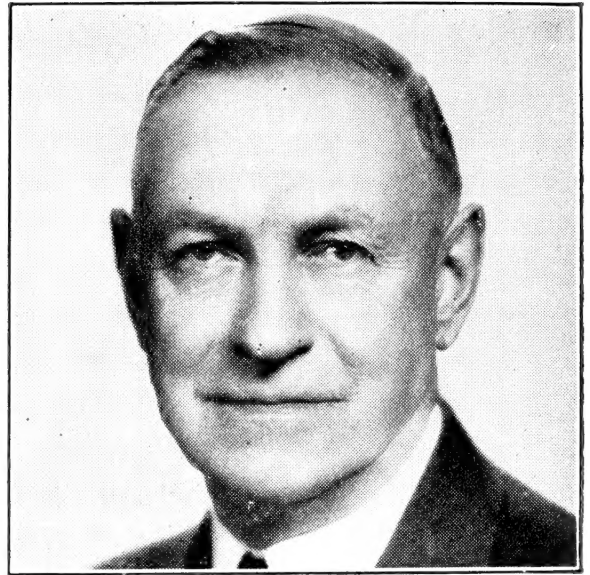
Side Blooms, QUEEN OF THE BI-COLORS . . . Center Blooms, DAISY SCHAFFER

**GILL BROS. Seed Co.**

*Fall Catalog 1951*



• EDW. E. GILL



RAY W. GILL

**DOWN TOWN SALES ROOM**  
827 S. W. 4th Ave. nr. Yamhill St.  
Portland 4, Oregon

**MONTAVILLA STA., PORTLAND 16, ORE.**  
Office, Farm, Retail Store and Mail Order Dept.  
N. E. 99th Ave. & Halsey St. - KENWOOD 7593

**SEATTLE STORE**  
1600 Pike Place  
SENECA 0431

## SIXTH ANNUAL FALL CATALOG

For forty-one years we have issued, annually, our Spring seed catalog. There was an increasing number of requests each year for us to issue a Fall catalog and our introduction of such was delayed by the war. In this, our sixth Fall catalog, we offer you one of the most complete Fall catalogs on the West Coast. We list many new and standard varieties. Our daffodils are mostly grown in Oregon and Washington. Tulips and Hyacinths are mostly imported from the best Holland growers. We send large bulbs that will bloom, with proper care, the first season. If you are not interested in this catalog please give it to a neighbor. We always strive to give you high quality bulbs and seeds.

\* At the time of the printing of this catalog, Edward E. Gill, partner with Ray W. Gill, died suddenly, Monday, July 2, 1951.

The Gill Bros. Seed Co. will continue to give the same quality merchandise and service.

### HOW TO ORDER

**Send all mail orders to Montavilla Station, Portland 16, Oregon.**

Order early, as there is a heavy demand on some stocks and they may be exhausted.

Remittance must accompany your order. Stamps are accepted up to \$1.00. Money Orders, Express Orders, Bank Drafts and Certified Checks are preferred, although other checks are accepted for collection.

If your remittance should be short, we will send you in accordance with the amount paid and thus avoid delay.

**C. O. D. Shipments will be made if one-fourth of the total order is remitted with the order.** You can save C. O. D. charges by sending your remittance with your order.

**Please write correspondence** on a separate sheet from your order.

**All prices** in this Catalog are postpaid to your address, unless otherwise noted.

**Prices quoted** cover only one kind for the listed price. You may order 6, **all one variety**, at the dozen rate.

### OUR WARRANTY

We give no warranty, expressed or implied, as to the productiveness of any seeds, plants or bulbs we sell and we will not be in any way responsible for the crop. Our liability in all instances is limited to the purchase price of the items ordered.

### SHIPMENT OF YOUR ORDER

We will fill your order whenever goods are in stock. Daffodils, Tulips, Hyacinths and most of the Fall bulbs for Fall planting are usually in stock by September 15th.

When your package is received, open it so that the bulbs will not mold. If not satisfactory please write us at once. Weather conditions permitting, plant at once if the proper season for the type.

### SUBSTITUTION

**IN VIEW OF THE FACT THAT SOME KINDS OF BULBS ARE SHORT THIS SEASON**, we would suggest that customers give as much as possible their permission for us to substitute the nearest variety to the one ordered in case we should be sold out. On items of small importance, or during the rush of planting season, when time is precious, we may send out other similar sorts, if out of the ones ordered. Such substitutions may be returned for credit if unsatisfactory to the purchaser.

### OUR CATALOG

This is not a stock catalog but is prepared for the printer by ourselves. Our firm is not a corporation but is operated by the owners represented above. With every order we enclose a bulletin on the culture of the various bulbs.



# DAFFODILS OR NARCISSI

Although the common English name "Daffodil" is more popular than the botanical name "Narcissi," either name is being used for these useful Spring flowers. The Jonquil is only one of the eleven groups of Narcissi.

While this is not a long list they are all proven varieties. Our bulletin on Fall bulbs is sent free with each order sent out. Bulbs available about September 10th. We send large, healthy bulbs, mostly Oregon and Washington grown. **Daffodil prices postpaid, including 4th zone. For 5th zone and beyond send 10% additional.**

If you order 6 at the dozen rate they must be all one kind. If you order one dozen you may select 2 kinds, 6 of each at the dozen rate.

## Yellow Trumpets

**AEROLITE**—Star shaped, deep primrose perianth, with yellow trumpet. A large flower that is a fine keeping cut flower. **Each 15c; 3 for 40c; doz. \$1.50.**

**BEN HUR**—A glorious "loud speaker" trumpet of pure Roman Gold, 2½ inches across at the mouth. Regardless of its immense size the flowers are well proportioned. One of the best. **Each 25c; 3 for 70c; doz. \$2.50.**

**DIOTIMA**—A giant of graceful formation. Rather flattened stems, often 2 feet long. Star shaped perianth of medium primrose often 5 to 6 inches across. The trumpet is a little deeper in color. One of the best. **Each 60c; 3 for \$1.70; doz. \$6.00.**

**KING ALFRED**—Deep golden yellow, of great substance on strong 2 foot stems. One of the most popular for garden, forcing and cutting. Large bulbs, double nose No. 1. **Each 15c; 3 for 40c; doz. \$1.50; 100 for \$12.00.**

**SUCCESSOR**—A very late deep golden yellow trumpet daffodil of superb yet graceful proportions. Massive overlapping deep golden yellow perianth, large, flaring, well formed trumpet. Very vigorous grower. **Each 20c; 3 for 55c; doz. \$2.00.**

### PACIFIC COAST DAFFODILS

We take pleasure in offering you these fine bulbs, mainly grown in Western Oregon and Washington, where the climate is so well suited for growing good bulbs.

We offer all the main classes in standard and newer varieties.

Write for prices in quantities—give varieties and amounts.

## Large White Daffodils

**MRS. E. H. KRELAGE**—Often called the "White King Alfred" because of similar formation. The petals open ivory white and the trumpet opens soft primrose yellow but gradually fades to creamy white. **Each 25c; 3 for 70c; doz. \$2.50.**

**ROMAINE**—Very large with pure white, wide open imbricated trumpet. A most artistic and refined flower. **Each 50c; 3 for \$1.40; doz. \$5.00.**

**ROXANNE**—A large creamy white trumpet with round, overlapping, pure white perianth. **Each 40c; 3 for \$1.10; doz. \$4.00.**

## Bi-Color Daffodils

**FEDORA**—Very large, flat and overlapping perianth. Crown deeply imbricated and frilled, uniform orange-yellow with a deeper well defined margin. **Each 40c; 3 for \$1.10; doz. \$4.00.**

**MRS. R. O. BACKHOUSE**—The pink trumpet daffodil. Fine informal perianth of ivory white, slim long trumpet of apricot pink changing to deeper pink at the fringed edge. Splendid keeping cut flower. **Each 50c; 3 for \$1.40; doz. \$5.00.**

**QUEEN OF THE BI-COLORS (See outside front cover)**—White perianth, canary yellow trumpet. Large flowers that last well. Early blooming. **Each 25c; 3 for 70c; doz. \$2.50.**

**SPRING GLORY**—Trumpet pure yellow, perianth white and of good form. Considered one of the best bi-color varieties. **Each 20c; 3 for 55c; doz. \$2.00.**

## Leedsii Type

This type has white perianths, while the crowns are white or light yellow, sometimes lightly tinged with pink or apricot. The dainty Star Narcissus.

**DAISY SCHAFFER (See outside front cover)**—Large, flat, well overlapping pure white perianth with large, widely opened cup of very light primrose, beautifully frilled at the edges. An outstanding variety. We consider this one of the best. It is very dainty yet large and will make splendid flowers, even when planted late. **Each 30c; 3 for 85c; doz. \$3.00.**

**TUNIS**—Broad, pointed, creamy white perianth, slightly recurving, with wide expanded, sulphur yellow cup, edged amber, deepening with age. An outstanding variety. **Each 25c; 3 for 70c; doz. \$2.50.**

## Incomparabilis Daffodils

The cup or crown measures from one-third to nearly the equal of the perianth segments. The perianths are yellow or white with cups yellow, yellow shaded red.

**DICK WELLBAND**—One of the best and a very strong grower and free flowering. The perianth is white and the cup flame orange-red. The color does not fade and intensifies with age. Outstanding because of its distinct contrast. **Each 20c; 3 for 55c; doz. \$2.00.**

**FORTUNE**—A giant of magnificent stature, perfect form and splendid color. Broad, flat, well overlapping perianth of clear golden yellow; large long cup of intense glowing deep orange throughout; finely ruffled at the brim. Early and free flowering; fine substance. **Each 25c; 3 for 70c; doz. \$2.50.**

**JOHN EVELYN**—Pure white perianth of large, round, strong, well overlapping petals; large cup of soft orange yellow, widely expanded and densely frilled at mouth. **Each 25c; 3 for 70c; doz. \$2.50.**

**MERULA**—Large flower; uniform soft yellow perianth; cup widely expanded, soft orange; frilled and of good substance. **Each 60c; 3 for \$1.75; doz. \$6.00.**

**SCARLET ELEGANCE**—Deep yellow perianth and bright orange-red cup of medium size. Tall stems and long lasting flowers. Ideal for cutting. **Each 20c; 3 for 55c; doz. \$2.00.**

## Barrii Type

The cup in this class measures less than one-third the length of the perianth segments.

**ALCIDA**—Creamy yellow perianth with orange-yellow crown, margined red. Sturdy, late flowering variety. **Each 15c; 3 for 40c; doz. \$1.50.**

**FLOWER RECORD**—White pointed perianth, cup deep yellow, edged deep orange, excellent forcer. **Each 25c; 3 for 70c; doz. \$2.50.**

**LA RIANTE**—Perianth white, cup red. **Each 25c; 3 for 70c; doz. \$2.50.**

**MIGOLET**—Pure white perianth, cup bright flame orange, a striking contrast. Flower long lasting. **Each 20c; 3 for 55c; doz. \$2.00.**

**POMONA**—Pure white wax-like perianth, petals overlap so that they form a complete circle. Flat citron-yellow cup, flushed apricot with small orange margin. When fully opened, cup changes from apricot to green while orange margin deepens and lends a unique beauty to the flower. **Each 40c; 3 for \$1.15; doz. \$4.00.**

## Poeticus Type

Perianths are snow white; cups are small and flat with yellow eyes, edged scarlet. Sweet scented and valuable for naturalizing.

**ACTAEA**—Large, pure white perianth of heavy substance and flat eye of yellow, bordered with dark red. The large flowers on tall stems are ideal for cutting. **Each 15c; 3 for 40c; doz. \$1.50.**

**ORNATUS**—Pure white, round shaped perianth with yellow eye, margined scarlet. **Each 15c; 3 for 35c; doz. \$1.25.**

**RECURVUS** or **PHEASANTS EYE**—Somewhat reflexing, white perianth with deep scarlet margined, green eye. Late; sweet scented; only for outside planting. **Each 15c; 3 for 35c; doz. \$1.25.**

## Jonquils and Jonquil Hybrids

**CAMPERNELLE (Double)**—Golden yellow, double flowers. **Each 15c; 3 for 40c; doz. \$1.50. Postpaid.**

**CAMPERNELLE GIGANTEUS (Single)**—Large, beautiful golden yellow flowers. **Each 15c; 3 for 40c; doz. \$1.50. Postpaid.**

**GOLDEN PERFECTION**—A large hybrid Jonquil with 2 or 3 bright yellow flowers on long stems. **Each 20c; 3 for 55c; doz. \$2.00.**

**GOLDEN SCEPTER**—Star-shaped perianth with large, trumpet like cup, slightly rolled back at the mouth; golden yellow; very fragrant. **Each 15c; 3 for 40c; doz. \$1.50.**

**JONQUILLA SIMPLEX**—The original single, sweet scented, with 3 to 5 rich yellow flowers to the stem. **Each 15c; 3 for 40c; doz. \$1.35. Postpaid.**

## Polyanthus Narcissus

Splendid for forcing and much used to place in bowls of water, braced with rocks or pebbles.

**CHINESE SACRED LILY**—Fragrant white flowers with yellow cups. Large bulbs. Can be grown in bowls of water for forcing. **Each 15c; 3 for 40c; doz. \$1.50.**

**GRAND SOLEIL d'OR**—Deep golden yellow perianth with orange yellow cup; borne in clusters. **Each 15c; 3 for 40c; doz. \$1.50.**

**PAPER WHITE**—White perianth and cup; very fragrant. Valuable for early forcing. **Each 15c; 3 for 40c; doz. \$1.50.**

**DAFFODIL PRICES**  
For 5th zone and beyond add  
10% to prices quoted.

# Double Narcissus

**ALBUS PLENUS ODORATUS**—Snow-white, gardenia shaped flower, wonderfully fragrant. Very late flowering. Each 15c; 3 for 35c; doz. \$1.25.

**CHEERFULNESS**—Double flowers of Poetaz type; white petals interspersed with yellow petals near center of flower. Fragrant. Each 15c; 3 for 40c; doz. \$1.50.

**DAPHNE**—Pure white, sweet scented double flowers. Valuable for home gardens and florist use, as it is an early forcer. This fine daffodil was held off the market by the florist who originated it so as to produce it for his own store. It made a sensation in the show gardens. Each 20c; 3 for 55c; doz. \$2.00.

**INDIAN CHIEF**—Very large and very double, bright yellow interspersed with orange; the petals curled and twisted. Each 20c; 3 for 55c; doz. \$2.00.

**MARY COPELAND**—White perianth segments, interspersed with shorter coronal segments, orange and orange scarlet. Each 30c; 3 for 85c; doz. \$3.00.

**TEXAS**—Large full double blooms. Golden yellow and brilliant orange petals in separate layers. Blooms 4 in. across on tall stems. Each 30c; 3 for 85c; doz. \$3.00.

**TWINK**—Primrose yellow perianth segments with alternating primrose and orange coronal segments. Each 20c; 3 for 55c; doz. \$2.00.

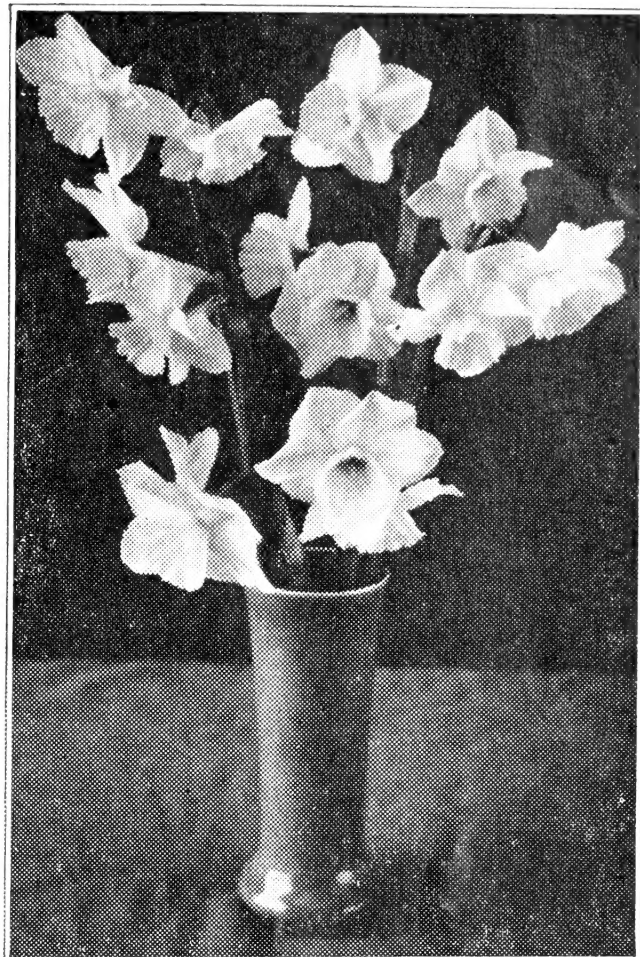
## Daffodils in Mixture

**SELECTED HYBRIDS**—This is your chance to grow some fine daffodils at low cost. One of the largest American breeders has developed many select hybrids to grow for further trial. These were grown to full blooming size. The rigid standards set by him require something different or superior to varieties already introduced before they could be named. The ones which failed to win names and introduction are included in this mixture. Many of these were outstanding new varieties such as would be expensive as new sorts. You can have many new varieties at very low cost. It is interesting to watch them bloom and the high quality of the flowers will surprise you. This is the best bargain we have ever offered in daffodils. (Double Nose No. 1 bulbs.) Grown in Oregon. Several types are included. You will not make a mistake if you order liberally of this. Each 15c; 3 for 40c; doz. \$1.50; 100 for \$12.00.

## Poetaz Type

Hybrids of Poeticus and Polyanthus Narcissus. Very fragrant and hardy, bearing flowers in clusters.

**LAURENS KOSTER**—Pure white perianth with yellow eye. Good for forcing or outside. Flowers in clusters and they are very fragrant. Several long stems from each bulb. Each 15c; 3 for 40c; doz. \$1.50.



Hybrid Jonquil, Golden Perfection, Page 2

## Rock Garden Daffodils

### LITTLE DAFFODILS

Valuable for rock gardens, beds or borders. Very hardy.

**BULBOCODIUM CONSPICUUS**—Deep lemon yellow funnel shaped flowers. Reed-like foliage; height 6 inches. The Hoop Petticoat flower. Each 12c; 3 for 30c; doz. \$1.10.

**CANALICULATUS (Tazetta type)**—Dainty little Narcissus about 6 inches high. White perianth with yellow cup; clusters of 3 to 5 flowers; sweet scented. Each 15c; 3 for 40c; doz. \$1.25.

**FEBRUARY GOLD (Cyclamineus hybrid)**—Golden yellow perianth with sharply reflexing petals; short, straight trumpet of deep golden yellow, fluted at mouth. Extra early; 12 inches. Each 20c; 3 for 55c; doz. \$1.85.

**SHOT SILK (Triandrus Hybrid)**—Three flowers to the stem. Perianth and cup uniform creamy white, slightly star-shaped, long narrow cup. Each 25c; 3 for 70c; doz. \$2.50.

**THALIA "The Orchid Flower"**—3 to 4 pure white flowers to the stem. Very popular and ideal for bouquets and corsages. Each 30c; 3 for 85c; doz. \$3.00.

# HYACINTHS

These important flowers are now available in large bulbs ready to bloom the first season after planting. Their beautiful pleasing colors add much to the early Spring flower garden. Plant 4 to 6 inches deep, preferably before December, spacing 6 to 10 inches apart. They are also valuable for forcing.

**Prices for extra large bulbs (18 to 19 cm. size). Each 35c; 3 for 95c; doz. \$3.50. Hyacinth prices postpaid, including 4th zone. For 5th zone and beyond send 10% additional.** Prices are based on one variety as quoted but you may order 6 of one kind at the dozen rate. Write for prices on 100 lots.

**ANNE MARIE**—New delicate pink, large bells on strong stems. Early forcing sort.

**CITY OF HAARLEM**—Very fine, earliest, bright golden yellow. Large truss.

**DR. STRESEMAN**—Attractive sky blue, large and broad well formed truss of large bells on strong stems. Good early forcer and bedder.

**GERRIT VAN DER MAY**—Rose-pink, broad, compact truss. Good for bedding and forcing.

**JAN BOS**—Carmine, lighter centered bells; compact spikes. Good for early forcing and bedding.

**KING OF THE BLUES**—Deep glossy blue, splendid, well formed, long compact spike on short stem, medium bells with great substance. Late forcer and good bedder.

**LADY DERBY**—Bright rose pink, very large spikes, extra fine for pots; medium late.

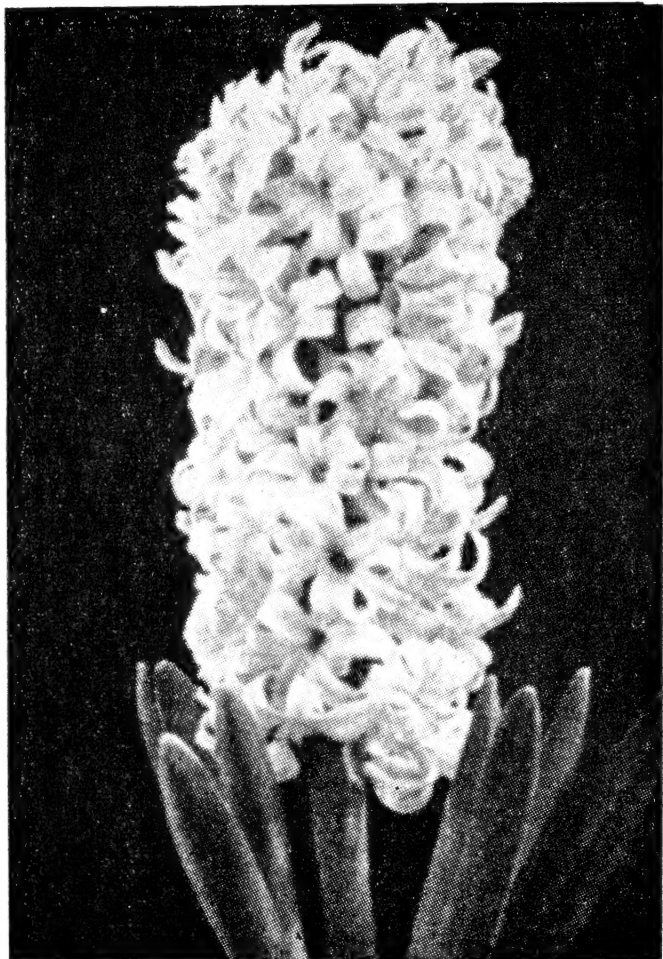
**L'INNOCENCE**—Pure white; broad loose trusses of elegant form; large, well shaped bells. The best pure white for all purposes; early.

**PINK PEARL**—Rosy pink; large broad spike on short stem; large bells. Early forcer and bedder.

**LARGE BULBS MIXED**—(Size 18 to 19.) These large bulbs are blended into a fine mixture from named varieties. Offered in mixture only. **3 for 80c; doz. \$3.15.**

## EARLY ORDERS

While all the bulbs are not available when this catalog is mailed we recommend early orders. If you are interested in larger quantities than we list, please write us giving amounts and varieties.



Hyacinth, L'Innocence, see this page

## Calochortus or Mariposa Tulip

A California flower resembling a tulip in shape with many colors, shades and markings. Offered in mixture. Plant in the Fall or early Spring about 2 inches deep and 3 inches apart in the row. **3 for 25c; doz. 85c; 100 for \$5.75. Postpaid.**

## Colchicum (Autumn Crocus)

A very unusual flower which blooms a few weeks after planting, blooming without foliage. They will also bloom on a shelf or table without water or soil. Flowers shaped somewhat like Crocus but larger and bloom before the foliage appears. It is sometimes called the Autumn Crocus. They bloom early in the Fall. Order now for delivery in August and September. Postpaid.

**AUTUMNNALE**—Large pale lavender. **Each 25c; 3 for 70c; doz. \$2.55.**

**AUTUMNNALE MAJOR**—Very large flowers; free blooming. Lilac pink. **Each 40c; 3 for \$1.10; doz. \$4.10.**

**ALBUM**—Large pure white. **Each 30c; 3 for 85c; doz. \$3.10.**

**VIOLET QUEEN**—Rich violet color. **Each 30c; 3 for 80c; doz. \$3.10.**

We specialize in flower seeds and bulbs for florists and commercial growers. We make germination tests on our flower seeds.



# TULIPS

We offer you a very fine list of these desirable Spring flowers. We expect our Holland bulbs to arrive about September 15 to 20 in plenty of time for planting. October is generally well suited for planting tulips. All prices are postpaid to your address within the United States. We include our bulletin on Fall bulbs with each order, free. It is advisable to plant both early and late varieties, thus prolonging the blooming season.

Heights given are for comparison only. Season, soil and time of planting affect the height.

## Early Single

These bloom long before the late types and in many brilliant colors. We supply nice large bulbs imported from one of the best Holland growers.

**Prices, unless noted (top size bulbs): 3 for 40c; doz. for \$1.50. Postpaid.** These prices based on one variety as quoted, but you can order 6 of one kind at the dozen rate. See instructions on Page 1. Ask for prices on 100 lots.

**COULEUR CARDINAL**—Deep scarlet, toned outside with plum; large pointed flowers of great substance on strong stems. Medium early. 11". Good for late forcing.

**GENERAL DE WET**—Golden yellow, splashed and stippled deep orange, giving effect of clear orange. Good for either bedding or forcing. 15".

**KEIZERSKROON**—Bright crimson scarlet with broad golden yellow border; cup shaped flowers on stout stems. 14".

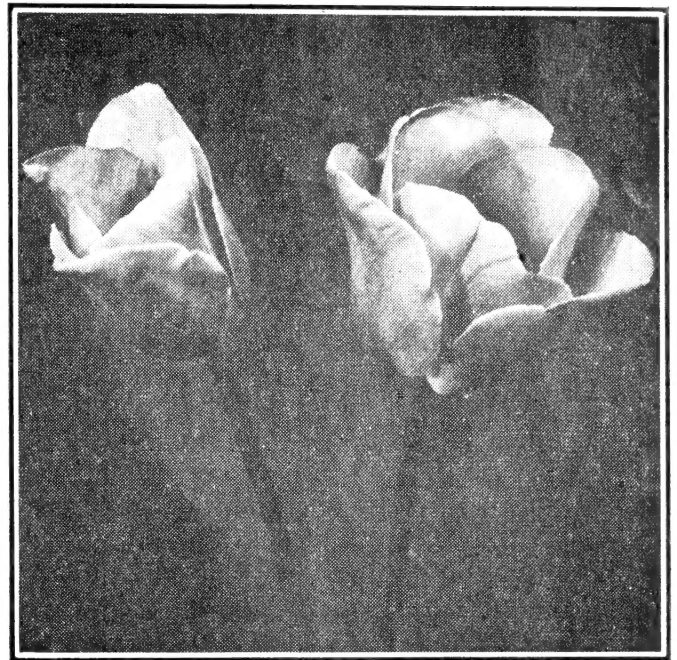
**MON TRESOR**—Clear golden yellow; very large flowers on stiff stems. Excellent for beds and forcing.

**PRINCE CARNAVAL**—Red with yellow markings; very distinct color. Sport of Prince of Austria. 13".

**SUNBURST**—Yellow, flamed and flushed red.

**WHITE HAWK (White Falcon, Albion)**—Large, globular milk white flowers of great substance, with crinkled petals on stout stems. Good forcer.

**EARLY SINGLE TULIPS MIXED**—Large bulbs in mixture, made from named varieties in a good range of colors. Offered in mixture only. Top size bulbs. 3 for 35c; doz. \$1.25; 100 for \$9.35. Postpaid.



Darwin Tulips, Page 6

## Parrot Tulips

The artistically, quaintly shaped flowers have lacinated or serrated, slashed petals at the edges. The flowers are large and showy. Whereas the old varieties have weak stems and are shy bloomers, the newer sorts have tall, strong stems and are more dependable bloomers. They usually flower along with the Darwins. All varieties listed are newer introductions. Some of the largest flowers are found in this type.

**Prices, unless noted: 3 for 40c; doz. \$1.50. Postpaid.** These prices for one variety as quoted, but you may order 6 of one kind at the dozen rate. Write for prices on 100 lots.

**BLUE PARROT**—Bluish-heliotrope flower of enormous size on strong, 24-in. stems. One of the best.

**FANTASY**—Salmon-pink with green marking on outer petals; inside deeper salmon-pink. A sport of Clara Butt. 27".

**ORANGE FAVORITE**—Orange with green blotches and yellow base. 22".

**PIERSON**—Rich red (Sport of Allard Pierson). Very attractive.

**RED CHAMPION**—Bright crimson red, elegant form. Large flower on strong stem. (Sport of Bartigan.) Each 20c; 3 for 50c; doz. \$1.75.

**SUNSHINE**—Pure golden yellow. Deeply lacinated flowers on medium tall stems. Sport of Cottage Tulip Bouton d'Or. Each 25c; 3 for 60c; doz. \$2.25.

**THERESE**—Huge cherry red with green markings. Very large, often 8" across. The inside is cerise scarlet. 27". Each 20c; 3 for 50c; doz. \$1.75.

**VIOLET QUEEN**—Lilac blue with white base. A delicate lovely color. Each 20c; 3 for 50c; doz. \$1.80.

### Hole-In-One Bulb Planter

For planting Dutch Bulbs. Postpaid \$1.05.

## Cottage Tulips

Cottage or Mayflowering Tulips are generally the most permanent type for garden use. They have chiefly oblong shaped flowers with narrow base, although there are Cottage Tulips strongly resembling the Darwins. Some varieties have reflexed petals. The stems are long and slender, but generally stiff. Besides a wide range of exquisite colors, there are many very good yellow sorts, a color rather rare in other late classes.

**Prices, unless noted, on top size bulbs: 3 for 40c; doz. \$1.40. Postpaid.** These prices based on one variety as quoted, but you may order 6 of one kind at the dozen rate. See instructions on Page 1. Write for prices on 100 lots.

**ALBINO**—Pure white, early, excellent form and substance; good forcer. **Each 15c; 3 for 40c; doz. \$1.50.**

**CARRARA**—Pure white with yellow anthers. Large globular flower. An outstanding variety. 24".

**GOLDEN HARVEST**—Soft salmon yellow with yellow anthers. Large globular flowers of great substance on tall, strong stems. Outstanding variety.

**GRENADIER**—Bright orange-red with yellow base; large sweet scented flowers.

**G. W. LEAK**—Geranium red. Creamy yellow base and yellow anthers. 26". **Each 15c; 3 for 40c; doz. \$1.50.**

**JEAN DESOR**—Deep yellow with orange red edges and black anthers. Large flowers on tall stems; very attractive and highly recommended. **Each 15c; 3 for 40c; doz. \$1.40.**

**MARJORIE BOWEN**—A combination of buff and salmon, which gradually passes to lilac-rose, flushed salmon. White base with black anthers. Large, long flower. 28".

**MRS. JOHN SCHEEPERS**—Giant, pure yellow flowers on tall sturdy stems. Long, oval shaped blooms. Very large. **Each 15c; 3 for 40c; doz. \$1.40.**

**PICOTEE (Maiden's Blush)**—White, with graceful reflexed petals margined deep rose. When in full bloom the whole flower is suffused pink. 18".

**PRESIDENT HOOVER**—Orange scarlet with yellow base and black anthers. Large, late flowers. **Each 15c; 3 for 40c; doz. \$1.40.**

**ROSABELLA**—Deep rose with light edges; inside soft rose with creamy white base and black anthers. Exceptionally good for outside planting. **Each 15c; 3 for 40c; doz. \$1.40.**

**EXTRA FINE MIXED**—A large range of varieties and colors in mixture. Top size bulbs in mixture only. **3 for 35c; doz. \$1.30.**

## Darwin Tulips

For every garden purpose Darwin Tulips are unequalled. They are unexcelled for bright colors, length and strength of stems. The flowers are triangular or cup shaped and have a flat base. Inside the flowers the base is usually blue or white, or a combination of these colors. They bloom rather late.

**Prices, unless noted, on top size bulbs: 3 for 40c; doz. \$1.50. Postpaid.** These prices based on 3 of a kind as quoted; but you may order 6 of one kind at the dozen rate. Write for prices on 100 lots.

**ALWINA**—Deep pure pink, seedling of Clara Butt.

**ARISTOCRAT**—Large oval flower of soft pink. One of the largest Darwins. 28".

**BARTIGON**—Clear crimson red, white base, ringed deep blue. Good for bedding and forcing. 28".

**BLUE PERFECTION**—Light violet blue, edged heliotrope, with white base. 29".

**CITY OF HAARLEM**—Intense deep scarlet, with white margined dark blue base. One of the best scarlet Darwins for growing indoors or outside. 31".

**CLARA BUTT (See outside back cover)**—Beautiful clear salmon-pink with blue base. A popular old variety for bedding. 28".

**DUKE OF WELLINGTON**—Pure white. 26".

**FARNCOME SANDERS**—Bright scarlet, inside vivid cerise scarlet with white base, marked blue. Large broad petaled flower of perfect shape. Late forcer.

**GOLDEN AGE**—Deep golden yellow with soft orange at edge of petals. Large outstanding flower of true Darwin shape.

**LA TULIPE NOIRE**—Velvety deep maroon black; excellent forcer.

**MADAME KRELAGE**—Bright lilac rose, silvery rose edges; inside soft rose pink.

**NARDI**—Very large rosy-red flower of fine form and unusual substance; tall, strong stem.

**NEW ORLEANS**—Very large, rich pansy violet, merging to dark crimson and dark rosy magenta. Base indigo blue, anthers black. Unusual color, 28".

**NIPHETOS**—Bright cream yellow, extra substance.

**PALEMBANG**—Clear pale yellow. Perfect Darwin form on tall, strong stem.

**PRIDE OF HAARLEM**—Brilliant rosy-carmine with blue base. Large flower on tall, strong stem. One of the most popular varieties for planting outside.

## DARWIN TULIPS—Continued

**PRINCESS ELIZABETH** — Rosy pink with lighter edges. Excellent bedder and forcer.

**PRIDE OF ZWANENBURG** — Salmon pink with narrow light edge. Large flowers on strong stems. 30".

**RED PITT** — Bright scarlet, excellent forcer and bedder.

**THE BISHOP** — Beautiful deep heliotrope; blue base with white halo and purple anthers. Best of its color.

**UTOPIA** — Brilliant red. One of the loveliest new Darwin tulips. Excellent for early forcing. 22".

**ZWANENBURG** — Pure white with black anthers; tall stems. Good keeper.

**DARWIN MIXED** — This embraces a fine range of color. Top size bulbs. 3 for 30c; doz. \$1.15; 100 for \$6.35. Postpaid.

## Double Tulips

**Prices, unless noted (top size bulbs): 3 for 40c; doz. for \$1.50. Postpaid.** These prices based on 3 of a kind, but you can order 6 of one kind at the dozen rate. See instructions on Page 1. Ask prices on 100 lots.

**ELECTRA** — Claret red, shaded carmine; very large double flowers on strong stems. Early.

**EROS (Triumph)**—Splendid old rose; late. 22".

**HINDOE**—Orange red; Murillo sport. Early.

**MOUNT TACOMA**—The largest double tulip. Pure white and fine for bedding; late. 24".

**MR. VAN DER HOFF**—A fine golden yellow; early. 11".

**MURILLO** — White, shaded pink towards edges of petals, giving the effect of a delicate pink; early.

**ORANGE NASSAU**—Blood red, flushed fiery red, with small margin of orange; early.

**PEACH BLOSSOM** — Deep rose-pink flushed white; large full flower on strong stem; early.

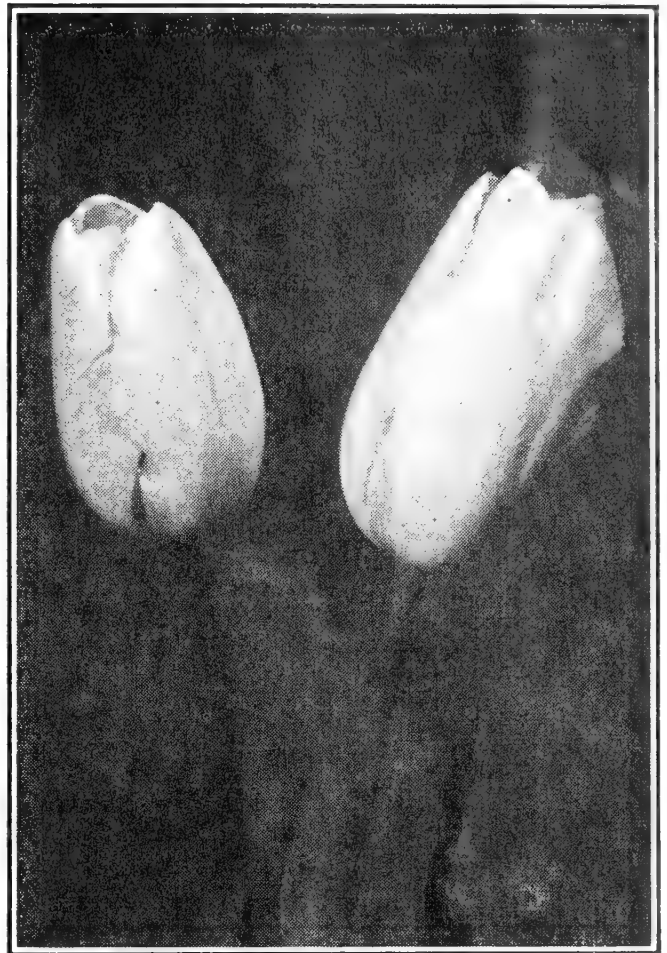
**SCARLET CARDINAL**—Brilliant double flowers of scarlet; very early. Ea. 20c; 3 for 55c; doz. \$2.00.

**SNOWBALL**—Splendid early white.

**VAN LIMBURG STIRUM**—Crimson red, base white and yellow. 11". Early.

### SPECIAL TULIP COLLECTION

See special tulip bargain  
on page 32.



Cottage Tulips, Page 6

## Botanical Tulips

Native of Southern Europe, Asia Minor and Central Asia. They have bright colors and pointed and recurved petals. They have a great variation in size, shape, form and foliage and have particular value for rock gardens and borders.

**Prices unless noted: Top size bulbs, 3 for 40c; doz. \$1.50. Postpaid.** Only one variety as quoted to secure these rates, but you may order 6 of one kind at the dozen rate. Write for prices on 100 lots.

**EICHLERI**—Bright scarlet with blotch on outer petals; the base is black, marked with golden yellow. Good sized flowers on 12-inch stems.

**KAUFMANNIANA** — Soft yellow, the outer petals tinged crimson; inside sulphur yellow. Flowers open very wide in the sunshine resembling a water lily. Height, 8 inches. Very early flowering.

**MADAME LEFEBER (Red Emperor)**—Fosteriana type. A hybrid with immense open flowers of brilliant scarlet. Height, 18 inches. Blooms very early, making a brilliant feature in the garden.

**PRAESTANS FUSELIER** — Brilliant vermilion orange, with 2 to 4 flowers to the stem. A very unusual and striking variety.

## Triumph Tulips

A newer race of Tulips, gained by crosses between the Early, Darwin, Breeder and Cottage Tulips, giving many new colors and combinations hitherto unknown. They make a sturdy growth and large flowers. Valuable outdoor varieties recommended for borders and show purposes.

**Prices: 3 for 40c; doz. \$1.50. Postpaid.** These prices based on one variety as quoted, but you may order 6 of one kind at the dozen rate. See instructions on Page 1. Write for prices on 100 lots.

**BANDOENG**—Mahogany red, flushed orange. Height, 20 inches.

**CORNIFORUS**—Carmine-red, white base and center; very large cup shaped flowers of great substance on tall, strong stems. For forcing or bedding.

**CROWN IMPERIAL**—Red, orange, brown, golden yellow feathered edge, yellow base, early forcer.

**ELMUS**—Cherry red with a silver white border. Extra large flowers on strong tall stems.

**EROS**—See list of double tulips.

**KANSAS (See back cover)**—Giant white with yellow base and center.

**RIJNLAND**—Crimson red, bordered yellow, strong stem, 20".

**TELESCOPIUM**—Violet rose, suffused red, violet base. Large flower of good substance on tall, strong stems.

**URSA MINOR**—Golden yellow, cup shaped flowers on medium sized, strong stems. Good for forcing and outside.

**WISCONSIN**—Magenta, center of petals overlaid with white stripe; white base; excellent for pot forcing. Large flower, medium stem.

**TRIUMPH MIXED**—Top sized bulbs in mixture. **3 for 40c; doz. \$1.35; 100 for \$9.85. Postpaid.**

## Lily Flowered Tulips

The flowers have the graceful appearance and form of the lily. Sometimes listed as a Cottage Tulip, their distinctive and decorative form rates a separate classification.

**ALASKA**—Soft, even yellow, petals slightly reflexed; 24". **3 for 40c; doz. \$1.50.**

**FIRELILY**—Brilliant scarlet red, fine lily form. **20c each; 3 for 55c; doz. \$2.00.**

**WHITE ENSIGN**—Opens creamy white, later pure white, yellow anthers, fine form and substance; 26". **Each 20c; 3 for 55c; doz. \$2.00.**

## Rembrandt Tulips

These are so-called "Broken Darwins," a very unusual, quite artistic class of variegated, flamed tulips of striking effect. **Each 15c; 3 for 40c; doz. \$1.50.**

**AMERICAN FLAG**—Lower petals bright deep red, upper part white with red stripes, base blue. White gradually shades to pink.

**CORDELL HULL**—Blood red on white.

**MADAM POMPADOUR**—Lilac pink, striped white, late forcer.

## Mendel Tulips

Not only excellent for forcing, their delicate colors are an addition to any garden; long stemmed and bloom between the Early and Triumph tulips. **3 for 40c; doz. \$1.50.**

**RIJNSOVER**—Pale yellow, globular flower; extra early forcer.

**SCARLET WONDER**—Fiery vermilion-red; early forcer.

**WHITE SAIL**—Pure white; extra good forcer.

## Crocus

Extra early Spring flowers; popular with everyone. Large flowering varieties.

**Prices unless noted postpaid, doz. 60c; 100 for \$4.50.** These prices based on one variety of a kind, first size bulbs. However, you may order 50 of one kind at the 100 rate.

**DARK PURPLE**—Very dark purple.

**WHITE**—Finest white.

**STRIPED BEAUTY**—White striped purple.

**MAMMOTH YELLOW**—Extra large. **Doz. 75c; 100 for \$5.50.**

**BLUE**—Best light blue.

## Leucojum, Snowflake

Hardy, robust plant producing in May, elegant spikes of long stemmed blooms which are useful cut flowers. Height 14 to 18 inches with heads of 4 to 8, white, drooping, bell-shaped blooms. The flowers have a small dot of green on the edge of each petal. Plant 3 to 4 inches deep, Sept. to Nov. preferred. **3 for 30c; doz. \$1.10; 100 for \$8.00. Postpaid.**

## Galanthus or Snowdrop

These popular, hardy Spring flowers are well known and very easy to grow. Plant in the Fall. Double.

**Postpaid. 3 for 30c; doz. \$1.10; 100 for \$8.25.**

# BEARDED IRIS

Very hardy and fast gaining in popularity. Plant the roots (rhizomes) so that they are barely covered with soil. Orders will be filled during August and up to November 1. You may place your orders any time. The soil and climatic conditions adjacent to Portland are ideal for growing strong, healthy rhizomes. We offer here many of the finest varieties, including novelties. **Price on a dozen** of one kind is 10 times the single rate. **Price on six** of one kind is one-half of dozen rate mentioned. **All prices postpaid.** Please note comparative height given in inches on most varieties.

**ABSOLUTE**—34 in. Standards of glowing tan and falls a deep copper shade, enhanced by striking orange beard. **Each \$1.00.**

**ALEPPO PLAIN**—36 in. This exceptional plicata has a creamy-white background, peppered with red. Mid-season. **Each \$1.50.**

**ALLUMEUSE**—40 in. Wisteria standards set off with a fiery orange beard and softened with mahogany falls. Mid-season. **Each 40c.**

**ALZA HOLA**—38 in. Charming and unusual self, likened to an airy white cloud with light sky filtering through. The edges of the flower touched with gold. Mid-season. **Each 75c.**

**ARABIAN PRINCE**—Standards bright garnet red with falls rich and velvety. **Each 30c.**

**AZURE SKIES**—36 in. A ruffled self of pale lavender blue. Almost horizontal standards are accentuated by a white beard. Late mid-season. **Each \$1.00.**

**BLACK WINGS**—A fine deep violet purple. Very popular. **Each 35c.**

**BLUE SKYSCRAPER**—50 in. Giant flowers with closed standards of medium blue; falls dark blue, washed violet. Early. **Each 35c.**

**BLUSHING YOUTH**—A soft pink toned flower. Substance and branching good. **Each \$1.50.**

**BOMBAY**—Gold standards; red brown falls. **Each 30c.**

**BROWN THRASHER**—34 in. One of the best brown iris. Medium sized flowers in two tones of golden brown like the glint of sunshine on a brown thrasher's wing. Mid-season. **Each \$1.25.**

**BUECHLEY GIANT**—Fine lavender blue. **Each 30c.**

**BURNISHED COPPER**—Probably the best copper colored. **Each 40c.**

**BURNISHED GOLD**—Deep golden yellow. **Each 50c.**

**CALIFORNIA GOLD**—36 in. Extra fine, bright yellow. Mid-season, late. **Each 35c.**

**CALIFORNIA PEACH**—38 in. A grand iris of pink and apricot blend. The standards shade from gold to old rose; falls salmon with a tinge of lavender in center of each fall. **Each \$1.00.**

**CANYON ROAD**—36 in. Opening a violet copper, the standards turn to golden tan. The falls, each with a bright violet patch at the center, open a copper-brown, toned to golden tan. Mid-season. **Each \$2.00.**

**CARLSBAD CAVERNS**—36 in. Huge flowers, ruffled lemon, the falls white with pencil streaks of gold. Blooms well spaced. Late. **Each \$1.50.**

**CAROLINE BURR**—40 in. Beautiful cream colored flowers with an iridescent sheen. Form and substance good, the branches well placed. **Each 75c.**

**CATHEDRAL DOME**—Hugh white, ruffled. **Each 50c.**

**CHEERIO**—Standards red, flushed old gold; falls deeper in color. **Each 30c.**

**CHIEF POKING FIRE**—34 in. A distinct flower of reddish brown velvet. Standards are wide and falls are round, wide and flaring. **Each \$1.50.**

**CHINA LADY**—36 in. Large translucent flowers of glistening ivory. A brilliant golden beard brightens the haft which is veined with gold. Mid-season. **Each \$1.00.**

**CHINA MAID**—40 in. Immense; good form and substance in blends of deep pink; golden bronze and soft lilac. Mid-season. **Each 75c.**

**CITY OF LINCOLN**—Standards rich yellow, falls bright chestnut red, edged with yellow. **Each 50c.**



Bearded Iris, Snow Flurry, Page 11

**CLARA NOYES**—Beautiful blending of orange and apricot tones. Falls veined rose. **Each 30c.**

**CLARET VELVET**—32 in. Deep, dark wine self with flaring velvety falls, closed standards and inconspicuous burnt gold beard. Mid-season. **Each 40c.**

**COPPER PINK**—38 in. Large soft pink blooms flushed with sparkling copper, enlivened by a burnt orange beard, gold dusted haft and blue style arms. **Each \$1.00.**

**DARK KNIGHT**—Big, tall, mahogany red. **Each 30c.**

**DAYBREAK**—38 in. Grand large pink iris, shimmering with coppery undertones. Mid-season. **Each \$1.00.**

**DEEP VELVET**—38 in. Rich deep purple self, with a brownish suffusion at the haft, enriched by a deep bronze beard. **Each 75c.**

**EASTER MORN**—One of the largest pure white sorts. **Each 30c.**

**EL CAPITAN**—A splendid variety; light manganese violet bi-color; large. **Each 30c.**

**ELSA SASS**—36 in. Sulphur yellow, deeper beard and throat, contrasted with a white blaze on the center of the falls. Mid-season, late. **Each 50c.**

**FAIR ELAINE** (See Inside Back Cover)—38 in. The fairest and first of the definite yellow bi-colors. A stately flower of cream white standards and rich golden yellow falls. Mid-season. **Each 50c.**

## BEARDED IRIS—Continued

**FAVORITE SON**—40 in. Large flowers on extra good stalks. Rich, purple. Each 75c.

**FIESTA**—36 in. Sparkling copper standards and apricot orange falls. Each \$1.50.

**FORT KNOX**—40 in. Beautiful light yellow, flowers well spaced on tall well branched stalks. Mid-season. Each \$1.00.

**FORTUNE**—32 in. Old gold, shadowed with rustic red, brings out the rich Florentine coloring in this iris of large size and broadly spreading form. Each 75c.

**FROST QUEEN**—21 in. Frosty white with slight gold veining at haft. Free bloomer. Each 35c.

**GAYOSA**—A rich and brilliant golden yellow iris. Standards and falls slightly ruffled. Mid-season. Each 50c.

**GEN'L MacARTHUR**—36 in. Enormous cream white self, heavily marked with inner glow of gold encircling the broad golden beard. Very late. Each 75c.

**GILT EDGE**—38 in. Creamy, pale yellow with full standards, wide hafts. Falls the same but outlined clearly with an edging of deeper gold. Each 50c.

**GLAD SONG**—24 in. A yellow ground plicata of tiffany strain. Twice blooming. Each 50c.

**GOLDEN CATARACT**—20 in. Aptly named; golden yellow standards cascading into semi-flaring falls of deep gold; orange beard. Twice blooming. Each 40c.

**GOLDEN FLEECE**—40 in. Its large ruffled form passes from pure sulphur to lemon yellow, with falls of creamy white banded with deeper yellow. Mid-season. Each \$1.00.

**GOLDEN HIND**—34 in. Clear rich, yellow. Standards slightly open while falls are flaring. Mid-season, late. Each 35c.

**GOLDEN MADONNA**—40 in. A beautiful creamy yellow iris. The large flowers have cream yellow standard with domed and semi-flaring falls of milk white, daintily edged cream yellow. Each \$1.00.

**GOLDEN MAJESTY** (See Inside Back Cover)—42 in. Deep orange yellow of large size. One of the best. Mid-season, late. Each 50c.

**GOLDEN SPIKE**—36 in. Pure golden yellow, with orange beard. Mid-season. Each 50c.

**GRACE BALLARD**—36 in. A distinct apricot blend with graceful form and good substance. Conspicuous in any garden. Mid-season. Each 50c.

**GRAND CANYON**—40 in. The grandeur of the size and color of this great iris must be seen to be fully appreciated. A blend of canyon colors, plum, copper and gold with slight ruffling. Mid-season. Each 75c.

**GREAT LAKES** (See Inside Back Cover)—48 in. Large flowers of clear blue with flaring stiff petals and beard of white. Mid-season. Each 75c.

**HAPPY DAYS**—Immense, soft yellow; branches loaded with blooms. Each 30c.

**HELIOS**—Huge blooms; standards lemon yellow; falls the same, delicately penciled rose. Each 30c.

**ICY BLUE**—44 in. The lightest blue toned iris, being a pale blue self, dusted with frosty white which sparkles in sunshine. Early. Each 50c.

**INDIAN HILLS**—38 in. Rich true purple of oval form and good substance; large in size and quite fragrant. Mid-season. Each 40c.

**INVICTUS**—38 in. Large flowers of intense deep yellow. Each \$1.75.

**JUNALUSKA**—40 in. Standards yellow, suffused bronze, with deep maroon falls. Early mid-season. Each 40c.

**KANSAS INGLESIDE**—32 in. Attractive red self. With watering and rich soil will bloom again in the Fall. Each 50c.

**KIRKWOOD**—38 in. Large, fragrant, velvety flowers with violet rose standards and deep violet red falls. Each 50c.

**KLONDYKE GOLD**—Enormous flowers of deep, pure yellow. Standards slightly domed, falls wide and flaring. Does not fade. Each \$1.00.

**LADY NAOMI**—38 in. Dainty white plicata, veiled in a fine network of soft pale lavender. Faint markings of brown at the haft of the large flowers. Mid-season. Each 50c.

**LADY OF SHALOTT**—34 in. Splendid new plicata whose white frilled standards are flushed rose pink with falls peppered with dots of pink. Mid-season. Each 75c.

**LA GLORIA**—A fine two-toned yellow. Each 50c.

**LAKE HURON**—36 in. Deep blue emphasized by a golden yellow beard. Mid-season. Each 50c.

**LANCASTER**—36 in. This distinct, tall iris has a rich rosy glow for color. Its mass of ruffled blossoms and coloring are unexcelled. Mid-season. Each 50c.

**LATE SUN**—40 in. A brilliant deep yellow with a red gold overlay. Flowers are large on well branched stalks. Each 75c.

**LIEUT. DE CHAVAGNAC**—10 in. A handsome red-violet, sturdy blooming and fragrant flower. Twice blooming. Each 50c.

**LOS ANGELES**—38 in. Pure white, edged with blue. Mid-season. Each 40c.

**LORI MAY**—35 in. The flowers of daphne pink have a smooth finish and good substance. Medium late. Each \$1.75.

**MAJENICA**—36 in. Salmon tinted pink blend, color clear and bright. Each 60c.

**MAROON DAMASK**—44 in. Large, tall dark maroon self. One of the latest to bloom. Outstanding new variety and fragrant. Each \$1.50.

**MARY CLOTILDE**—40 in. Powder blue, perfect blooms on tall well branched stalks. Beard is white tipped with blue. Very fragrant. Mid-season. Each 75c.

**MATTERHORN** (See Inside Back Cover)—38 in. Pure glistening white with graceful waved and arched standard. Delicate, ruffled semi-flaring falls. Early mid-season. Each 50c.

**MING YELLOW**—36 in. Large and stately, a faultless yellow self. Slightly waved form and good substance. Mid-season, late. Each 60c.

**MINNIE COLQUITT**—36 in. Heavily ruffled plicata of white with a heavy clear red purple border. Mid-season. Each 75c.

**MISS CALIFORNIA** (See Inside Back Cover)—48 in. Large orchid pink. Tall stems; vigorous plants. Late. Each 50c.

**MISSOURI**—37 in. Clear blue, broad flaring flowers of excellent texture. Each 50c.

**MME. LOUIS AUREAU**—30 in. A rosy tinted plicata. The silvery white background is dotted and sanded with rosy-lavender. Mid-season. Each 40c.

**MT. ETNA**—36 in. Glistening snow white. Large flowers, smooth and well spaced. Mid-season. Each 40c.

**MT. WASHINGTON**—50 in. A gigantic white iris borne on tall stalks. Mid-season. Each 50c.

**MULBERRY ROSE**—40 in. Deep, radiant mulberry rose self, showing a light brown shade. Large flowers of fine substance on tall stalks. Mid-season. Each \$1.00.

**NARANJA**—Rich, deep yellow with orange cast on falls. Each 30c.

**NATIONAL GIANT**—44 in. Gigantic blossoms with standards bronze-violet which are closed, and rounded down-falling falls of rose-violet, accentuated by violet veining at haft and an orange beard. Mid-season. Each 40c.

**NATIONAL WHITE**—46 in. Pure white, giant blooms. Delicate ruffled edges. Early to mid-season. Each 75c.

**NIGHTFALL**—36 in. A striking new iris with falls of rich dark purple and standards of brighter and lighter shades of blue. Mid-season. Each 75c.

**NYLON**—36 in. A smooth light caramel blend, large blooms of ruffled form, good substance and growing habit. Each 75c.

**OREGON SUNSHINE**—38 in. Large, fragrant blooms of soft light yellow on extra good stalks. Standards are closed, ruffled and with ruffled semi-flaring falls. Early. Each 40c.

**ORMOHR**—40 in. Gigantic blooms on tall well branched stalks. Mangonese violet, heavily veined cream and dotted deep violet. Mid-season. Each 50c.

**OSCEOLA**—40 in. Clear sky-blue self with crinkled texture; rich golden beard lights the haft of softest brown. Mid-season, late. Each 35c.

**PERSIAN PRINCE**—34 in. Standards bright yellow, falls chestnut brown. Well branched stems, blooms of good form and size. Vigorous grower. Mid-season. Each 75c.

**PICADOR**—Extra fine; standards honey yellow; falls mineral red. Each 30c.

**PINK IMPERIAL**—50 in. Beautiful blush pink blooms on tall stalks that carry about seven blooms. Each 75c.

**PINK MARVEL**—39 in. Glorious salmon pink. Large flowers, rapid grower. Mid-season. Each 75c.

**PINK REFLECTION**—36 in. Clear cut flower of heavy texture and good size. Hydrangea pink with buff underlay; lemon chrome beard. Late. Each \$1.00.

**POT O' GOLD**—36 in. An outstanding deep yellow self. One of the best golden yellow iris. Mid-season. Each \$1.00.

**PRAIRIE SUNSET**—36 in. Brilliant flowers in iridescent colors of apricot, peach, pink and rose with a sprinkling of gold. Mid-season, late. Each \$1.00.

**PRISCILLA**—31 in. A dainty fluted pure white iris, with white beard, excellent substance. Each \$1.00.

**PURISSIMA**—Fine, pure white. Early. Each 30c.

**RADIANT**—35 in. Standards of brilliant burnished orange, falls of rich copper red. Each 50c.

**RED AND GOLD**—A fine yellow with copper standards and rich bi-color falls. Each \$1.50.

**RED VALOR**—36 in. Brilliant, rich garnet red, marked with unusual brown beard. Domed standards and flaring falls. Mid-season. Each \$1.00.

**RED VELVET**—36 in. Red standards, deeper at edge, falls carmine with darker rim, velvet texture. Each \$1.00.

**REMEMBRANCE**—38 in. One of the best pink blends with a yellow over-tone to enliven the blooms. Mid-season. Each \$1.00.

**RIO ORO**—40 in. Exquisite glistening honey yellow self. Extra good. Mid-season. Each \$1.00.

**ROSE FESTIVAL**—44 in. An outstanding rose-pink self. The closed standards have a strong mid-rib and the broad falls are well rounded. Hafts are glowing gold and beard gold, tipped with violet. Mid-season. Each \$1.00.

**ROYAL SCOT**—36 in. A tall plicata that is so deeply trimmed in pleasing tones of burgundy red that at a distance it gives a red effect. Each \$1.00.

**SAN DIEGO**—Giant deep blue with yellow beard. Each 30c.

**SHINING WATERS**—Large, clear light blue flowers on tall stems. Each 30c.

**SIERRA BLUE**—A true self blue. Falls are broad and of unusual length. Each 30c.

**SIERRA SNOW**—40 in. Late blooming; flowers pure white on fine stems and branches; outstanding variety. Mid-season. Each 50c.

**SILVER SUSY**—50 in. Silver white, large flaring flowers on tall stately stalks. Mid-season. Each \$1.75.

**SNOW FLURRY**—50 in. Buds open like a rosebud; delicate blue buds opening into large, fluffy blooms. White, with most delicate faint tone of blue. Early. Each \$1.00.

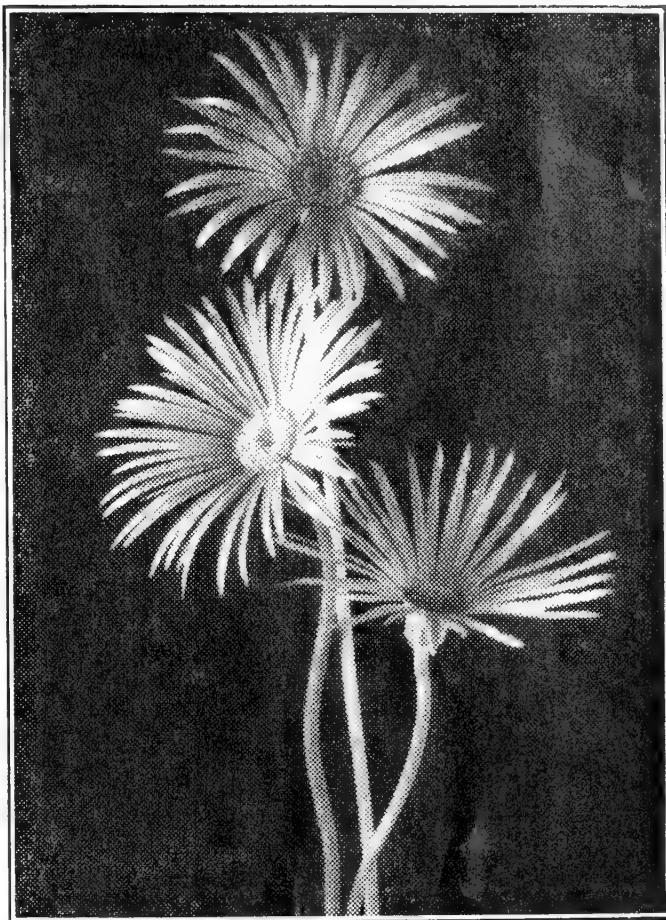
**SOQUEL**—38 in. A huge exotic lavender; vigorous in growth. Very large flowers with broad foliage. Each 50c.

**SOUND MONEY**—10 in. Golden dwarf of perfect form. Prolific bloomer. Each 35c.

**SPARKLING BLUE**—38 in. A large, clear, flax blue that fairly sparkles in the sunlight. It blooms through a long period without fading. Mid-season. Each \$1.00.

**SPRINGFIELD**—Almost a self of deep violet and garnet red. Each 50c.

**STARDOM**—34 in. Unusual in its blending of salmon, apricot and rose with yellow lights showing through. A very free bloomer with flowers of good form and substance. Each 50c.



Gerbera Plants, Page 14

**SUNDAY BEST**—Rich cream-colored self, broad and firmly domed standards; semi-flaring falls are broad, bright orange beard and yellow flush at haft. Each \$2.00.

**SUNNY RUFFLES**—38 in. Glorious new lemon yellow chrome. Form is ruffled and falls have a deeper border of gold. Medium late. Each \$1.00.

**THE GUARDSMAN**—38 in. Dusty pink standards and falls of a slightly deeper shade that are edged with the color of the standards. Early to mid-season. Each \$1.00.

**TIFFANY**—36 in. A large, ruffled, soft yellow plicata with stitching of deep rose, heavier on the falls. Mid-season. Each 50c.

**TIFFANJA**—42 in. Distinctive yellow plicata with standards of colonial buff and round spreading falls of glistening white, edged colonial buff. Mid-season. Each \$1.00.

**VALIANT**—Rich, soft blue blend, with strong, orange red beard and haft of gold. Large blooms, good stems, vigorous growth. Each 35c.

**VELVET KING**—40 in. Large flowers of glowing red, that seem cut from velvet. Prominent veining at haft, enhanced by a heavy gold beard. Each \$1.00.

**WEST POINT**—36 in. Two-toned indigo blue, standards lighter than falls with shaded brown at haft. Late. Each \$1.25.

**WINTER CARNIVAL**—40 in. An outstanding flaring white. Mid-season. Each \$1.00.

**WM. A. SETCHELL**—36 in. One of the largest iris. Standards steel-blue; falls deep violet blue. Strong stems, vigorous plants. Late. Each 75c.

**WOTON**—Deep smoky purple standards, falls velvety purple maroon. Each 30c.

**ZUNI**—Standards golden tan, falls red-brown overlaid with copper. Each 30c.

## Bearded Iris Collections

**RAINBOW COLLECTION**—12 varieties, labeled; (\$3.60 value). Postpaid to 4th zone, for \$2.65; 5th zone and beyond, for \$2.85.

**SUPER COLLECTION**—Selection of 12 choice iris, labeled; (\$6.50 value). Postpaid to 4th zone, for \$4.50; 5th zone and beyond, for \$4.70.

# LIST FOR FALL AND SPRING PLANTING

We offer here a very complete list of bulbs for Fall and Spring planting. You will find here many fine flowers not usually listed. It is always our endeavor to secure quality in bulbs and to offer proven varieties. All prices are postpaid unless otherwise noted.

## Abyssinian Sword Lily

(Sometimes called the fragrant gladiolus)

A real find from Western Abyssinia. It grows from bulbs or corms which form numerous bulblets or cormels. As easily grown as the gladiolus, it is similarly planted and harvested. It flowers from mid-August to September. It has tall rigid stems, 4 feet or higher, with very sweetly scented flowers. Petals are pure glistening white with a purplish maroon blotch at their base. An excellent cut flower. Flowering size bulbs. Available in February and March. 3 for 35c; doz. \$1.35.

## Agapanthus

(BLUE LILY OF THE NILE)

They produce large umbels containing 100 up to 150 buds and blooms all at once, blooming in July and August. The ever-green foliage resembles that of the amaryllis and the flower stems stand sturdy as high as 4 feet. Hardy along the coast and throughout California except in high elevations. In other sections it is best to cover them during winter. Large, single divisions available February to April. Each 60c; 3 for \$1.60; doz. \$6.00. For 5th zone and beyond add 10% to these prices.

## Allium

**ALBA GIGANTEA**—A hardy type of flower belonging to the onion family. Clusters of attractive white flowers much prized for cutting. Can also be forced. This variety is later and superior to most sorts. 3 for 25c; doz. 85c.

**MOLLY**—Golden yellow flowers in June. 3 for 40c; doz. \$1.10.

**SPHAERECEPHALUM**—Purple flowers in July. 3 for 45c; doz. \$1.25.

## Anemones

We carry the Tecolote Strain, noted for large size and brilliant colors.

**MONARCH DE CAEN**—A magnificent strain of single poppy anemones with immense flowers. Brilliant and varied colors from pink to beautiful shades of blue and brilliant scarlet. Top size bulbs. Mixture only. 3 for 30c; doz. 90c; 100 for \$6.75. Postpaid.

**ST. BRIGID "CREAGH CASTLE"**—Large, semi-double flower. Brilliant hues and delicate shades including rose, pink, lavender and blue. Top size bulbs. Mixture only. 3 for 35c; 12 for \$1.00; 100 for \$7.50. Postpaid.



Abyssinian Sword Lily, this page

## Amaryllis

**CALIFORNIA HYBRIDS**—A fine strain of large Amaryllis Hybrids. The bulbs can be potted January to May and flower freely indoors. They can also be grown in the garden and be taken up and stored like Gladioli. A good range of colors in mixture. Large bulbs. Each 90c; 3 for \$2.50; doz. \$9.15. Postpaid. For 5th zone and beyond add 10% to these prices.

**HARDY AMARYLLIS BELLADONNA**—Throughout the Spring months they produce attractive green foliage which dies down in July. A month later the flower stalks spring out of the ground to a height of 2 to 3 feet with umbels of lily shaped flowers 8 to 12 in number and of delicate lilac pink color. Large bulbs. Each 50c; 3 for \$1.35; doz. \$5.15. For 5th zone and beyond add 10% to these prices.

## Begonias

See next Spring catalog for complete list of types, in all color range; also named varieties.



## Bleeding Hearts

**SPECTABILIS** — The popular hardy perennial and of easiest culture. Long racemes of graceful heart shaped flowers. Will do well in shade or sun. **Each 75c; 3 for \$2.10. Postpaid.**

**WHITE BLEEDING HEART** — Rare native perennial. The clusters of graceful suspended blooms are pure white and bloom from mid-Spring until frost. Thrives in rich, humusy, non-acid soil, with plenty of moisture, continuous light, to deep shade. Slender, sturdy, 12-in. stems, excellent for cut flowers and naturalizing. **Each 75c; 3 for \$2.10; doz. \$7.50. Postpaid.**

## Bletilla Hyacinthina

**HARDY CHINESE ORCHID** — Hardy under all conditions. It bears 7 to 8 orchid shaped flowers on stems 12 inches tall. Also good in pots and frequently used for corsages. Offered in lavender and white. **Each 50c; 3 for \$1.40; doz. \$5.00.**

## Calla Lilies

Hardy outdoors along the Coast of Oregon, Washington, also in the milder sections of California. Plant 4 inches deep and 2 feet apart. Available January to April. Can be started inside and planted outside in May.

**LARGE WHITE CALLA** — Strong, vigorous grower with flower stems 3 to 5 feet high. Large roots. **Each 55c; 3 for \$1.50; doz. \$5.50. For 5th zone and beyond add 10% to these prices.**

**YELLOW CALLA** — Flowers bright yellow, foliage deep green, spotted white. Plant 1 to 2 inches deep. **Each 60c; 3 for \$1.60; doz. \$6.00. Postpaid.**

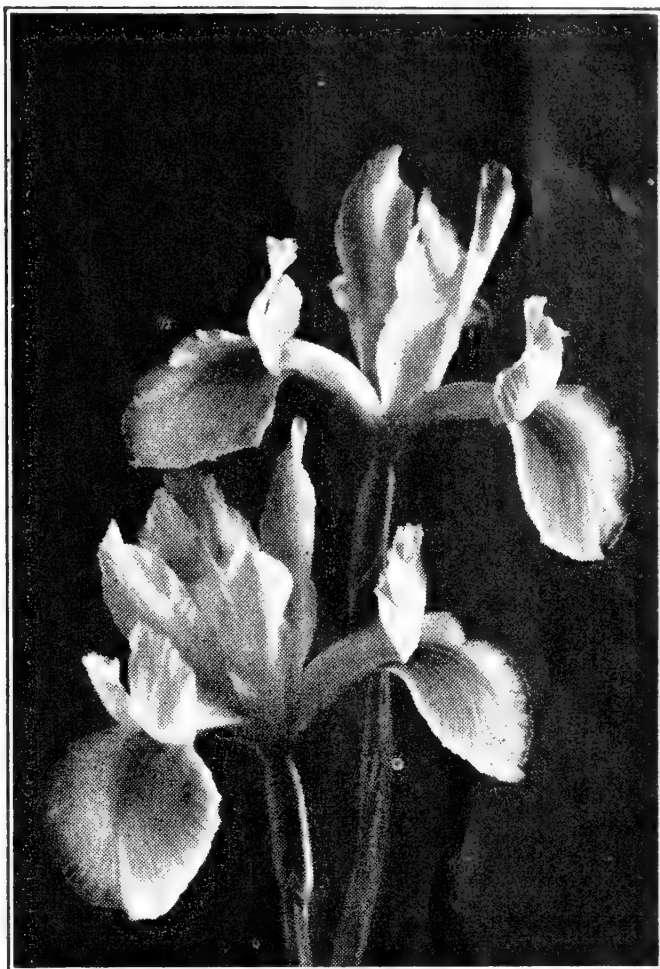
**PINK CALLA** — Medium sized flowers of rose pink shading to cerise when fully open. Height 10 inches. **Each 55c; 3 for \$1.50; doz. \$5.50. Postpaid.**

**BLACK CALLA (Arum Pictum)** — The odorless black calla. **Each 75c; 3 for \$2.10; doz. \$7.50. Postpaid.**

**ALBA MACULATA** — Dwarf white flower with red markings and blotches in the throat. Quite rare. **Each 65c; 3 for \$1.80; doz. \$6.50. Postpaid.**

## Chionodoxa

**LUCILIAE** — Also called Glory of the Snow. A fine early Spring flower blooming with the Crocus. Sky blue flowers with pure white hearts. Very hardy and ideal for borders, beds, and for naturalizing. Plant September to November, 3 to 4 inches deep. **3 for 15c; doz. 50c; 100 for \$3.50.**



Dutch Iris, Page 14

## CHIONODOXA—Continued

**LUCILIAE ALBA** — White flower in early Spring. **3 for 25c; doz. 65c; 100 for \$4.90.**

## Daisies

**ESTHER REED DAISY** — Fine large white flowers, completely double. Large, well rooted divisions. **Each 35c; 3 for 95c; doz. \$3.50.**

## Eranthis Hyemalis

(Winter Aconite)

The earliest of all Spring flowers. Golden buttercup flowers rest on emerald green leaves. Suited to shady, moist locations, even under trees. **3 for 15c; doz. 50c; 100 for \$3.50. Postpaid.**

## Erythroniums (Lambs Tongue)

Beautiful native flowers from the Pacific Coast. Lily type flowers in soft shades; mottled foliage. Plant 3 inches deep, preferably in partial shade. Offered in mixture. **3 for 25c; doz. 85c.**

## AUTUMN CROCUS

See Page 4.

## Freesias (Ticolote Hybrids)

Plant inside except in the South. They bloom in February or March, with fragrant flowers largely used for cutting. Offered in mixture only. **3 for 30c; doz. \$1.00; 100 for \$6.75. Postpaid.** You may order 6 at the dozen rate.

## Gladiolus Nanus

(Baby Glads)

A strain of Fall planted Gladiolus, easily grown and hardy down to 16 degrees F. They bloom in late June and early July, making dainty and graceful bouquets. Plant about 4 inches deep in the Fall in well-drained soil. Available in the Fall. Also popular for corsages. When planted in the Fall, mulch with straw for protection. Can also be planted in the early Spring. **Prices, uniformly: 3 for 35c; 12 for \$1.25; 100 for \$9.50. Postpaid.**

**AMANDA MAY**—Bright salmon.

**PEACH BLOSSOM**—Exquisite pink.

**SPITFIRE**—Brilliant scarlet.

**THE BRIDE**—Lovely white.

**MIXED**—A good mixture of colors. **Doz. \$1.15. Postpaid.**

## Gerbera (Transvaal Daisy)

**CALIFORNIA HYBRIDS**—A superior strain of giant single and duplex types with wide open flowers in a well blended mixture of brilliant colors, predominating in salmon, orange, red and pink shades. Delivery February to May. Large 2 to 4 eye root divisions. **Offered in mixture only. Each 35c; 3 for 95c; doz. \$3.50.**

## Japanese Iris

**Prices: Each 75c; 3 for \$2.15; doz. \$7.00. Postpaid.**

**CAROLINE G. CHILDS**—Single. White petals veined blue-violet, standards blue and white. Height 32".

**DOMINATOR**—Single. Rich indigo blue with narrow white stripes and light center.

**MT. HOOD**—Double. Light blue shaded darker, bright orange center.

**NISHIKI-YAMA**—Large, vinous mauve double, flushed and veined white. Center petals banded with mauve.

**PURPLE AND GOLD**—Double. Rich violet-purple with white petaloids tipped violet, golden throat with blue-white rays.

**BEARDED IRIS**

See Pages 9-11.

## Dutch Iris

This list comprises some of the finest novelties. Good bulbs of blooming size. **These prices are postpaid.**

**ARTHUR BRIET**—Purple blue, bronze lip, spotted orange. **Each 20c; 3 for 55c; doz. \$2.00.**

**BELLE JAUNE**—Large flowers; two toned orange yellow. **Each 20c; 3 for 50c; doz. \$2.00.**

**BLUE RIBBON**—Royal blue of a delicate velvety texture. Early blooming, require ample space for full development. **Each 20c; 3 for 55c; doz. \$2.00.**

**BRONZE BEAUTY**—Large flowers; standards violet blue; falls bronze with orange mark. **Each 15c; 3 for 40c; doz. \$1.25.**

**COPPER KING**—A very large deep bronze. **Each 15c; 3 for 35c; doz. \$1.25.**

**GOLD AND SILVER**—1950 introduction. Huge flower, has pure white standards and orange yellow falls. Tall and very strong stems; fine for forcing. **Each 40c; 3 for \$1.10; doz. \$4.00.**

**KING MAUVE**—Giant flowers of beautiful orchid lavender. **Each 15c; 3 for 40c; doz. \$1.50.**

**MAUVE QUEEN**—Mauve, with silvery blue lip, outstanding new color. Very large and substantial flower. **Each 20c; 3 for 55c; doz. \$2.00.**

**LEMON WONDER**—Extra large, lemon yellow. **Each 20c; 3 for 55c; doz. \$2.00.**

**PRINCESS BEATRIX**—Large, two-toned orange yellow. Extra fine. **Each 20c; 3 for 55c; doz. \$2.00.**

**PRINCESS IRENE**—Large, striking flower with orange yellow falls and clear white standards. **Each 20c; 3 for 55c; doz. \$2.00.**

**WHITE PERFECTION**—Beautiful new white, very large, early, excellent texture and forcer. **Each 20c; 3 for 55c; doz. \$2.00.**

**SUPERB NOVELTY MIXED**—A fine mixture made up from new named varieties. **3 for 35c; doz. \$1.30.**

## Fairy Iris

Brilliant green, broad foliage. Very vigorous growth with rapid increase of rhizomes. Dainty flowers on long slender stems. While the flowers are sparsely set on the stems they bloom for weeks. Every bud will bloom out in water after the first flowers. Flowers about one inch across, dainty white with very soft pink tones. **Each 35c; doz. \$3.50. Postpaid.**

## English Iris

They thrive in any good well-drained soil. Splendid cut flowers for late June and early July. Winter protection needed in severe climates. Lavender, light blue, orchid, white, wine red. **3 for 40c; doz. \$1.25. Mixture, doz. \$1.15.**

# Iris Reticulata

**RETICULATA S. J. DIJT**—A dwarf iris that blooms early in the season along with the crocus. In shape it resembles Dutch iris with blossoms large for such a small plant. Stems 6 inches high and the flowers have a violet-like fragrance. Color deep reddish purple. **3 for 35c; doz. \$1.25; 100 for \$9.25.**

## Iris, Spuria (Root Iris)

Non-bulbous, rhizomatus, for outside culture. Marvelous long stemmed cut flowers. **Prices on both kinds. Each 25c; 3 for 70c; doz. \$2.50.**

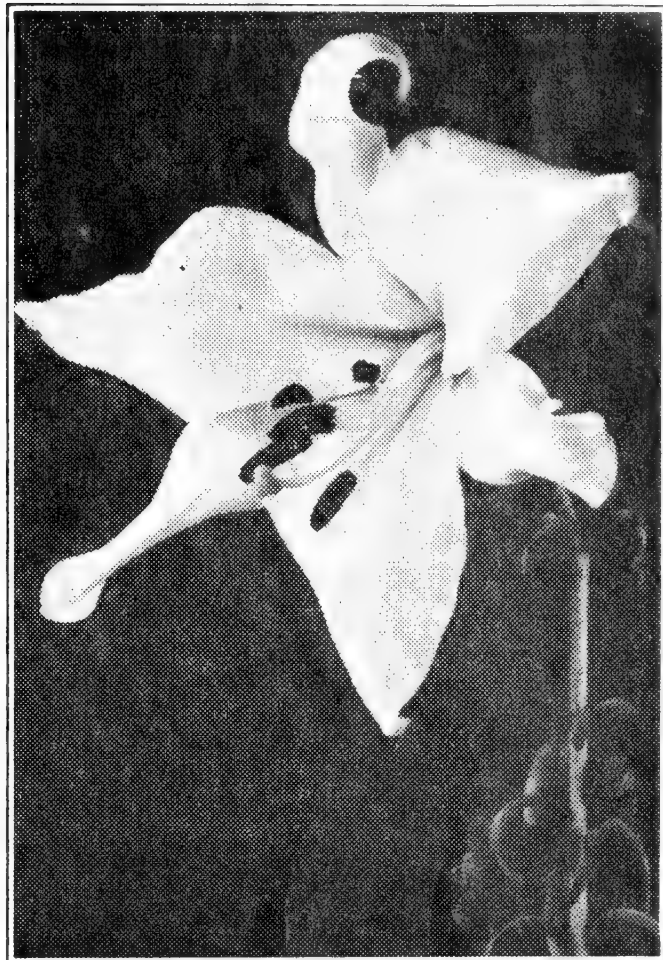
**AUREA**—The richest of all yellow iris. Self golden blooms of the same substance, form and size as Dutch iris, but four blooms on 4 to 5 foot stems.

**OCHROLENCA**—Like Aurea but early flowering and ivory white with a gold band in the center of the falls.

## Day Lilies, Hemerocalis

These hardy perennials are greatly improved, far surpassing the old varieties. Fall or Spring delivery. The dozen rate for one kind is 10 times the single rate. 6 of one kind at the dozen rate. **Prices postpaid.**

	Each
<b>Bagdad</b> —Rich coppery red and brown. Large flowers .....	.50
<b>Black Hawk</b> —Deep maroon with contrasting yellow throat .....	1.50
<b>Chengtuo</b> —Coppery red and carmine .....	.75
<b>Dawn</b> —A rosy buff or copper-pink tone .....	.50
<b>Golden Dream</b> —Deep golden orange .....	.50
<b>Goldeni</b> —Deep golden, broad petaled flowers .....	.25
<b>Hyperion</b> —Canary yellow. Large waxy flowers .....	.75
<b>J. S. Gaynor</b> —Soft apricot. Heavy texture .....	.50
<b>Kwanso</b> —Large orange, toned copper .....	.50
<b>Linda</b> —Golden yellow, base with red eye. Ruffled .....	.50
<b>Mikado</b> —Deep orange with maroon blotch .....	.35
<b>Modesty</b> —Delicate pale lemon yellow .....	.40
<b>Morocco Red</b> —Garnet red, 3 ft. July .....	1.50
<b>Royal</b> —Golden yellow. Fragrant .....	.40
<b>Sunny West</b> —Immense soft canary yellow .....	.60
<b>Taj Mahal</b> —Maize yellow with purple .....	.75



Lily, Centifolium, Page 16

## Ixias

**FINE MIXED**—Half hardy, late blooming Spring flower, splendid for cutting or forcing. Colors range through white, cream, orange, yellow, red, pink, lavender, green, etc., in mixture only. Beautiful, interesting flowers. Fall delivery. **3 for 25c; doz. 85c.**

## Peruvian Lily

### ALSTROMERIA

**AURANTIACA**—Large orange flowers in clusters and a splendid cut flower. Very productive of flowers on long stems. Root divisions can be planted in Fall or early Spring. Very hardy. **Each 25c; 3 for 70c; doz. \$2.50.**

**CHILENSIS HYBRIDS**—Gorgeous clusters of flowers on 2 to 4 foot stems in beautiful pastel shades. Offered in mixture usually containing shades of apricot, coral, salmon, shell pink, rose pink, salmon pink, yellow and white. **Each 35c; 3 for 95c; doz. \$3.50.**

## Lily of the Valley

Hardy out of doors. They require a mellow, rich soil and a moist, shaded position. Cover pips one-half inch deep. Delivery November to February. Oregon grown pips: **6 for 45c; doz. 80c; 100 for \$5.00. Postpaid.**

We supply several thousand market gardeners and florists with our seeds. If you have not used our seeds and bulbs why not try us this year.

## Select List Hardy Lilies

Most lilies require well-drained soil. Some shade on the ground is very good but the sun is needed around the upper plant. The soil should be fibrous and rooty; some leaf mold or peat should be added. Plant one foot apart. Charcoal and sulphur sprinkled in planting helps to ward off worm attacks and blue mold. We offer large, blooming size bulbs. Our bulbs will be sent at the proper season. Most of our lily bulbs are grown in Oregon and Washington. Lily bulbs can not be kept too dry or too moist. Most varieties can be planted in the Fall.

**We specialize in lilies. Note the new and standard varieties.**

**AURATUM (Platyphyllum) (Gold Banded Lily)**—One of the largest and most beautiful of all lilies. The immense blooms are brilliant, sweet scented and artistic. We offer clean, healthy bulbs that will bloom the first season. White petals, dotted with small dark spots with distinct yellow band through the center of the petals. Large bulbs. Available February. **Each 70c; 3 for \$2.00; doz. \$7.00.**

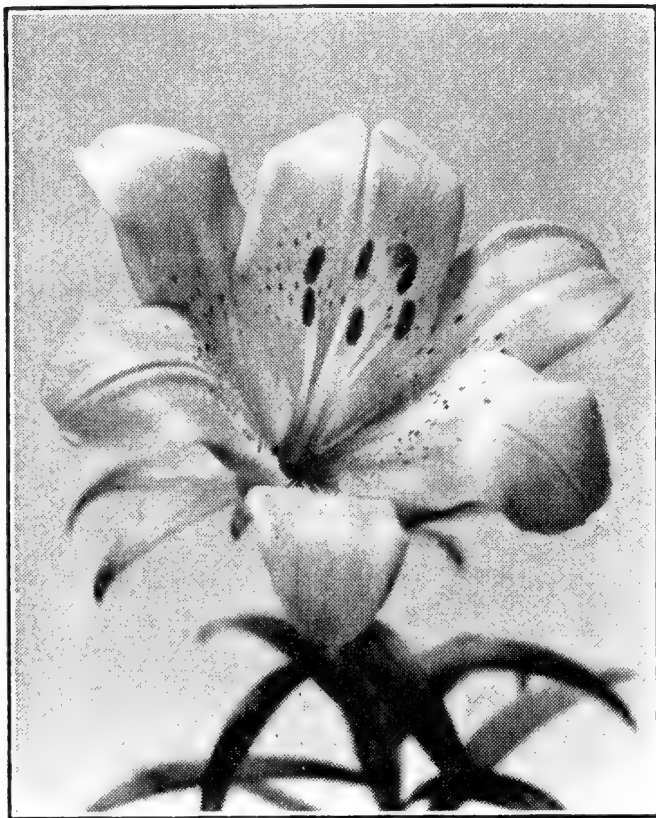
**BELLINGHAM HYBRIDS** — Colors range from soft yellow, buff terra cotta, through shades of copper and orange to red, dotted with dark red or soft brown spots. Clusters of 20 to 30 flowers, on stiff stems 4 to 5 feet high. Mixture only. **Each 40c; 3 for \$1.10; doz. \$4.00.**

**CANDIDUM (Cascade)**—An improved strain of the old Madonna variety. Larger flowers and taller stalks. Blooms in July. Vigorous in growth. Plant in August and September. **Each 55c; 3 for \$1.50; doz. \$5.50.**

**CENTIFOLIUM (Olympic Hybrids)** — Beautiful, hardy garden lilies with vigorous growth reaching as high as 6 feet tall. The flowers range from trumpet shape to bowl formation. Colors range through creamy yellow, purplish tones, icy green and white. Mixture only. Blooms after Regal lilies. **Each 35c; 3 for \$1.00; doz. \$3.50.**

**CROFT LILY**—The popular Easter Lily for forcing, also suited to outdoor planting in the milder climates such as Western Oregon and Washington, also the Southern States. Very large, pure white trumpets on stems about 12 to 14 inches tall in outside culture or 18 to 20 inches in greenhouses. **Each 45c; 3 for \$1.25; doz. \$4.50.**

**ESTATE**—A very stately and impressive lily of the Easter Lily group. Adapted for garden culture or for potting. Pure white, large trumpets and heavy substances, blooming in clusters of several blossoms. **Each 50c; 3 for \$1.40; doz. \$5.00.**



**New Lily, Flamingo**

**FLAMINGO (Rainbow Hybrid) (New)**—Vigorous, upright flowering lily; soft Flamingo pinkish-orange. **Each 90c; 3 for \$2.50; doz. \$9.00.**

**FIREFLAME (Mid-Century Hybrid) (New)**—Large, rich Indian-red, outward-facing flowers, with broad recurved petals on two-foot stems. **Each \$1.30; 3 for \$3.50; doz. \$13.00.**

**FORMOSANUM**—The latest of the popular lilies, blooming in September and October. Long white trumpets, with stems often 4 to 6 feet tall. The bulbs are small but should be planted 5 to 6 inches deep in full sun or partial shade. **Each 35c; 3 for \$1.00; doz. \$3.50.**

**GREEN MOUNTAIN HYBRIDS**—Flowers of unusual size with white trumpets which have a green color in the throat and brown shaded exterior. Quite distinct in shape and color from Olympic Hybrids. A superior group of plants ideal for exhibition or specimen planting. Best when planted in partial or light shade. **Each 55c; 3 for \$1.60; doz. \$5.60.**

**HENRYI**—Rich apricot yellow with a few brown spots; grow 3 to 5 feet; very hardy and free flowering. Plant 8 to 9 inches deep. **Each 55c; 3 for \$1.50; doz. \$5.50.**

### FREE RADIO TALKS

Upon your request we will mail, without charge, a set of 15 radio talks by Ray W. Gill, as given this year. They cover vegetable cultures.

**LUCIE WILSON** — A new early Speciosum type. Blossoms beautifully frilled pink, with white edges and spotted deep maroon. One of the best for corsage flowers. Blooms last up to 10 days when cut. Large bulbs, often send up 4 to 6 strong stalks with 12 to 14 blooms per stalk. **Each \$1.00; 3 for \$2.85; doz. \$10.00.**

**PARADE (Mid-Century Hybrid) (New)** — Rich golden-yellow; outward-facing flowers, with burnished gold mid-rib in each petal. Blooms well spaced on 2-foot stems. **Each \$2.00; 3 for \$5.50; doz. \$20.00.**

**PARDALINUM (Sunset Lily)** — Large numbers of flowers having reflexed petals; bright orange, spotted maroon, tipped orange scarlet. An easily grown, hardy lily, thriving in shade or cool and moist sunny locations. Height 5 to 7 feet; July flowering. Plant 4 inches deep. **Each 35c; 3 for \$1.00; doz. \$3.50.**

**REGALE** — Magnificent hardy lily from China; vigorous, 3 to 5 feet, bearing several large, white, fragrant flowers, slightly shaded pinkish brown outside the trumpets. Thrives in any good well-drained soil, preferring full sun. Plant 6 to 9 inches deep. **Medium size bulbs, each 25c; 3 for 65c; doz. \$2.60. Extra large bulbs, each 50c; 3 for \$1.40; doz. \$5.10.**

**SPECIOSUM RUBRUM (Pink Tiger Lily)** — A strong, vigorous grower with stems 3 to 4 feet tall, with bright blossoms which are shaded rose and spotted deep red. Plant 9 inches deep. Available January. **Each 65c; 3 for \$1.85; doz. \$6.60.**

**SPECIOSUM ALBA** — Highly prized white form of Speciosum Rubrum; blooms about two weeks later than the Rubrum. Available in January. **Each 90c; 3 for \$2.50; doz. \$9.00.**

**TESTACEUM** — Salmon apricot with orange anthers. Does well under the same conditions as Candidum and blooms at the same time. A very unusual lily. Plant in August, 3 inches deep. **Each \$1.15; 3 for \$3.25; doz. \$11.50.**

**TENUIFOLIUM (Coral Lily)** — Brilliant coral-red, recurving blooms of waxy texture. Often 20 flowers on slender, graceful stems. Very early. Plant 4 to 5 inches deep in light soil in full sun. It makes only small bulbs. **Each 25c; 3 for 70c; doz. \$2.50.**

**TIGRINUM SPLENDENS** — Very hardy and free flowering lily; blossoms bright orange, spotted black. Plant 6 inches deep. **Each 35c; 3 for \$1.00; doz. \$3.50.**

**VAGABOND (Mid-Century Hybrid) (New)** — Soft apricot with pink sheen, slightly spotted with soft brown; outward-facing flowers on three-foot stems. Blooms over a period of several weeks. **Each \$1.60; 3 for \$4.50; doz. \$16.00.**



New Lily, Fireflame, Page 16

## Muscari (Grape Hyacinths)

A splendid Spring flower. Very hardy and will grow under almost all conditions. Ideal for borders and naturalizing.

**BLUE** — A popular color. **Doz. 50c; 100 for \$3.75.**

**ALBA** — White flowers. **Doz. 70c; 100 for \$5.00.**

**PLUMOSUM (Plume Hyacinths)** — Feathery plumes of delicate violet; very attractive. They last exceptionally well when cut. Very hardy. **Prices: 3 for 25c; doz. 60c; 100 for \$4.50. Postpaid.**

## Milla Biflora

White, wax-like flowers, about 2 inches in diameter. Wiry stems, 12 to 18 inches tall, bearing 2 to 7 flowers each. Free blooming from July to September. Flowers cut well and have slight fragrance. January to February delivery. **3 for 35c; doz. \$1.25.**

## Montbretias

This important flower will be listed in our Spring Catalog.

### OUR SPRING CATALOG

Will be mailed to all our customers about Jan. 1st. If you do not receive one please write us.

## Ornithogalum

**ARABICUM**—Tall spikes bearing numerous large, milk white, star-shaped flowers with black centers and having a distinct aromatic perfume. Very easy culture. This flower is very unusual and is little known. It makes a very good cut flower. **3 for 35c; doz. \$1.25; 100 for \$9.35. Postpaid.**

**UMBELLATUM (Star of Bethlehem)**—This variety is very hardy with narrow, upright, green foliage, striped white. Flowers white on 10-inch stems. **3 for 25c; doz. 85c; 100 for \$4.50. Postpaid.**

## Oxalis

It can be grown in pots inside or planted in open ground in the early Spring. It blooms from early summer until frost and grows 8 to 10 inches tall. Ideal for beds and borders. If planted outside they should be dug in the Fall like gladiolus.

**HIRTA**—Large, deep pink flowers. Winter blooming.

**BERMUDA BUTTERCUP**—Rich yellow.

**GRAND DUCHESS**—Lavender, also offered in rose pink.

**Prices: Any of the above 50c per doz.; 100 for \$3.75. Postpaid.**

## Peonies

This list contains fine standard varieties that have given good satisfaction. Available this Fall about October 15th. Good strong divisions. **Sent postpaid. For 5th zone and beyond add 10c for each plant for extra postage.**

**DUC DE WELLINGTON**—Sulphur-white. **Each \$1.15.**

**DUCHESS D'ORLEANS**—Early, deep pink, salmon center. **Each \$1.00.**

**KING OF ENGLAND (Japanese)**—Early, mid-season, dark red. **Each \$1.30.**

**LAMARTINE**—Late, dark old rose. **Each \$1.20.**

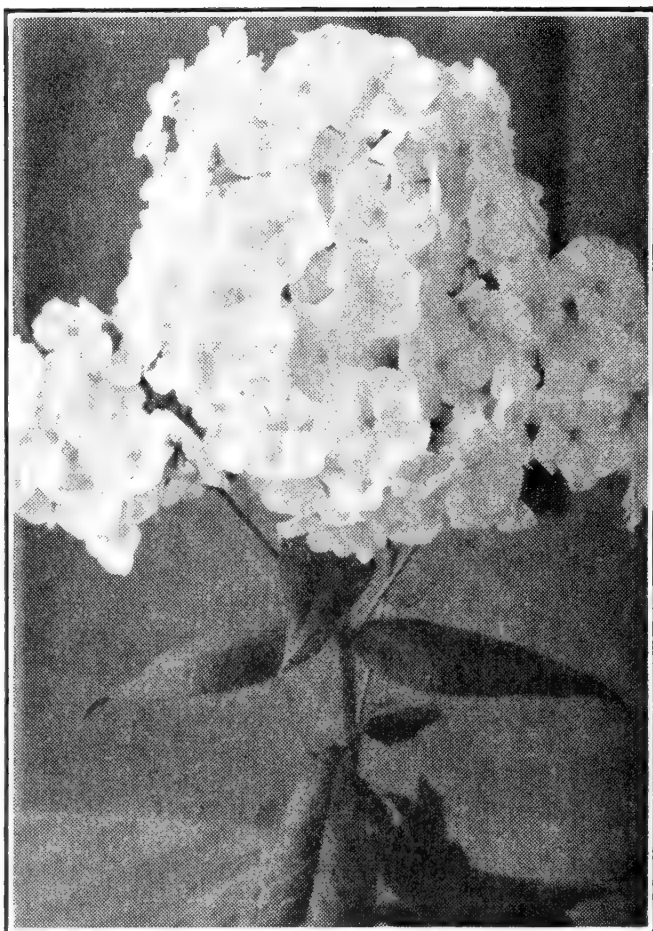
**LOTTIE COLLINS**—Mid-season, good red. **Each \$1.00.**

**MIKADO (Japanese Type)**—Guard petals deep rich crimson with center of yellow, shaded to red at base. Tall erect stems, mid-season. **Each \$1.35.**

**MONS. JULES ELIE**—A rich pink shading deeper toward base of petals. Prominent broad guard petals enclose immense ball of incurved petals of same color. **Each \$1.20.**

**PRIMEVERE**—Good light yellow. **Each \$1.40.**

**PEONIES BY COLOR**—Offered in pink, red and white; double; unnamed. **Each 65c; doz. \$6.10.**



Hardy Phlox, Apollo White, This Page

## Hardy Phlox

We offer new and standard varieties of hardy phlox in strong one year growth, disease free. Ready in October. **Prices postpaid. 6 of one kind at dozen rate.**

**APOLLO WHITE**—Pure white, large pyramidal truss, tall and late. **Each 35c; doz. \$3.50.**

**BORDER GEM**—Brilliant rich French purple, tall erect, mid-season. **Each 40c; doz. \$4.00.**

**BRILLIANT**—Fiery carmine with deeper eye, medium height, early. **Each 30c; doz. \$3.00.**

**CHERRY RIPE**—Deep rose, shaded scarlet; large petals, dwarf, early. **Each 45c; doz. \$4.50.**

**COLONIAL**—Light blue, tall, late. **Each 30c; doz. \$3.00.**

**FLASH**—Scarlet red, medium height, strong grower, mid-season. **Each 35c; doz. \$3.50.**

**FRAU ALFRED VON MAUTHNER**—Large salmon orange flowers, small crimson eye, medium height, late. Immense clusters. **Each 45c; doz. \$4.25.**

**GRAF ZEPPELIN**—White with vermilion red eye, medium height, mid-season. **Each 40c; doz. \$4.00.**

**MRS. HARDING**—Brilliant scarlet with orange cast, large florets, medium height, mid-season. **Each 35c; doz. \$3.50.**

**RHEINLANDER**—Beautiful salmon pink, darker eye, tall, mid-season. **Each 35c; doz. \$3.50.**

**ROSEA SUPERBA**—Light soft pink with deeper eye, enormous pyramidal flowers, tall, mid-season. **Each 40c; doz. \$4.00.**

**RUBY LEE**—Large flowers of plum purple, medium height, late. **Each 40c; doz. \$4.00.**

## Trillium

**OVATUM**—One of the best Trilliums. Large flowers opening pure white, gradually turning pink and later to wine purple. Plant in Fall in shade with leaf mold. **3 for 50c; doz. \$1.50. Postpaid.**

## Ranunculus

**TECOLOTE GIANTS MIXED**—They can be planted in the Fall or early Spring. February, March and April plantings are very successful. A great range of color and embracing many new shades. Giant double and semi-double, peony-like flowers, two inches across. Yellows from straw color through all shades to deep golden yellow-red, including dark crimson, scarlet, orange-red, in fact all shades of red and orange-pink. Can be planted outside in the Fall in Southern States and along the Pacific Coast in Oregon and Washington, and are usually safe with some protection. They may be grown inside in frames or pots. Flowers are borne freely on stems 12 to 15 inches. In mixture only. **3 for 35c; doz. \$1.25; 100 for \$9.35.**

## Scillas

They usually bloom along with the tulips. Graceful spikes with bell shaped flowers somewhat similar to the blooms of hyacinths. They will thrive under nearly all conditions, making them ideal for beds and borders; also naturalizing. There are several types of this flower.

**Prices unless noted: Postpaid. 3 for 20c; doz. 50c; 100 for \$3.75.** First size bulbs. Prices based on one variety of a kind. However, you may order 6 of one kind at the dozen rate or 50 at the 100 rate.

**SIBERICA BLUE**—Light blue.

**SIBERICA ALBA**—Clear white.

**ROSEA (Campanulata or Wood Hyacinths)**—A splendid pink variety.

**CAMPANULATA BLUE**—Fine blue.

**CAMPANULATA WHITE**—A good white.

## Tigridia or Tiger Flower

These will be offered in our Spring Catalog. For best results plant in the Spring.

## Sparaxis

**MIXED**—Showy flowers on stiff, wiry stems about 9 inches high. Pleasing color combinations with contrasting throats. A mixture of many shades such as pink, lavender, yellow and pastel. Plant in Fall or early Spring, and may also be planted inside. Plant 2 inches deep. If you have never grown this flower you are missing a real attraction. Very striking colors are produced from these bulbs. **3 for 25c; doz. 70c; 100 for \$5.00.**

## Tritelia (Star Flower)

**UNIFLORA VIOLACEA**—Produces star-like violet blue flowers in early Spring. Fine for rock gardens, borders or naturalizing. About 12 inches tall, very floriferous and hardy. Fall delivery. **3 for 20c; doz. 65c. Postpaid.**

## Tritoma

**Prices postpaid. For 5th zone and beyond add 10% to these prices.**

**PFITZER'S HYBRIDS**—These new hybrids have a range of color from white to red shades. Hardy perennials blooming August to October. Tall spikes often 3 feet tall. Available February to April. Roots. **Each 30c; 3 for 85c; doz. \$3.10.**

## Tuberoses

Lovely, large flowers of thick wax-like texture on graceful, long, strong stems. Valuable in the gardens, also for cut flowers. They have a rich exotic fragrance. Plant after danger of frost, 2 inches deep to top of bulb. They prefer well drained soil and sunshine. The flower stems are about 15 to 20 inches tall and bloom in August and September. Near the seacoast they can be left in the ground over Winter if protected, but in other sections it is best to dig and store them. Available in February. Offered in double. **3 for 45c; doz. \$1.50. Postpaid.**

## Watsonias

Much like tall giant spikes of gladiolus that bloom during June and July. The spikes grow 4 to 5 feet tall and do best in a sunny location. Plant 3 inches deep. Fall planting is safe along the coast and they can be left in the ground over Winter in those localities. In sections of severe cold it is best to plant in the early Spring and dig and store them each year. Ready for shipment in the Fall. **Mixed only: 3 for 35c; doz. \$1.10. Postpaid.**

## Zephyranthes (Fairy Lily)

Dainty little flowers suitable for pots, rock gardens and borders. Ready in October. **Prices postpaid.**

**CANDIDA, WHITE**—**3 for 20c; doz. 75c.**

**ROSEA, ROSE**—**Each 15c; 3 for 40c; doz. \$1.35.**

# FLOWER SEED LIST

This list is prepared for those who wish to plant early in greenhouses, frames or flats inside. This enables you to secure your flower seeds early. See descriptions in our Spring Catalog. This is not a complete list of flower seeds we offer. For complete list see our Spring Catalog. All prices in this list subject to change Jan. 1, 1952. A—Annual; P—Perennial.

## Asters, A.

PRINCESS MARGARET (New)—Rose	Pkt. 50c
PRINCESS SUSAN (New)—Blue	Pkt. 30c
PRINCESS ELIZABETH—White	Pkt. 30c
PRINCESS BARBARA	Pkt. 25c
PRINCESS ANNE	Pkt. 25c
PRINCESS BONNIE	Pkt. 25c
PRINCESS MARSHA	Pkt. 25c
PRINCESS TYPE MIXED	Pkt. 25c
EARLY GIANT PEACH BLOSSOM	Pkt. 20c
EARLY GIANT LIGHT BLUE	Pkt. 20c
SUPER GIANT SANTA MARIA	Pkt. 30c
SUPER GIANT EL MONTE	Pkt. 20c
SUPER GIANT LOS ANGELES	Pkt. 20c
IMBRICATED POMPON	Pkt. 25c
EARLY BEAUTY MIXED	Pkt. 15c; 1/8 oz. 50c
CALIFORNIA GIANT SINGLE MIXED	Pkt. 15c
CALIFORNIA GIANT SUNSHINE MIX	Pkt. 20c
CALIFORNIA GIANT WHITE	Pkt. 15c
CALIFORNIA GIANT PEACH BLOSSOM	Pkt. 15c
CALIFORNIA GIANT LIGHT BLUE	Pkt. 15c
CALIFORNIA GIANT DEEP ROSE	Pkt. 15c
CALIFORNIA GIANT PURPLE	Pkt. 15c
CALIFORNIA GIANT MIXED	Pkt. 15c
GIANT CREGO SHELL PINK	Pkt. 15c
GIANT CREGO ORCHID	Pkt. 15c
GIANT CREGO CRIMSON	Pkt. 15c
GIANT CREGO WHITE	Pkt. 15c
GIANT CREGO AZURE BLUE	Pkt. 15c
GIANT CREGO PEACH BLOSSOM	Pkt. 15c
GIANT CREGO DEEP ROSE	Pkt. 15c
GIANT CREGO MID-BLUE	Pkt. 15c
GIANT CREGO PURPLE	Pkt. 15c
GIANT CREGO MIXED	Pkt. 15c
GILL'S FANCY MIXED	Pkt. 10c
HEART OF FRANCE	Pkt. 15c
AMERICAN BEAUTY—White	Pkt. 15c
AMERICAN BEAUTY—Shell Pink	Pkt. 15c
AMERICAN BEAUTY—Crimson	Pkt. 15c
AMERICAN BEAUTY—Azure Blue	Pkt. 15c
AMERICAN BEAUTY—Mixed	Pkt. 15c

## African Daisy, A.

HYBRIDS MIXED	Pkt. 10c
---------------	----------

## Arctotis, A.

GRANDIS	Pkt. 10c
---------	----------

## Ageratum, A.

BLUE PERFECTION	Pkt. 10c
FAIRY PINK	Pkt. 25c
MIDGET BLUE	Pkt. 15c

## Alyssum, A.

COMPACTUM VIOLET QUEEN	Pkt. 15c
LITTLE DORRIT	Pkt. 10c
IMPROVED CARPET OF SNOW	Pkt. 10c
COMPACTUM YELLOW	Pkt. 10c
LITTLE GEM	Pkt. 10c
LILAC QUEEN	Pkt. 10c
SAXATILE COMPACTUM, p.	Pkt. 15c

## Aquilegia (Columbine), P.

BLUE SHADES	Pkt. 25c
PINK SHADES	Pkt. 25c
MRS. SCOTT ELLIOTT—Long Spurred	
Hybrids	Pkt. 15c
SHORT SPURRED PURPLE	Pkt. 20c

## Begonia Seed (Tuberous), P.

DOUBLE CAMELLIA FLOWERED	Pkt. 85c
--------------------------	----------

## Bellis or Double Daisy, P.

MONSTROSA MIXED	Pkt. 15c
MONSTROSA RED	Pkt. 25c
MONSTROSA WHITE	Pkt. 25c
MONSTROSA ROSE	Pkt. 25c

## Calendula, Pot Marigold, A.

ORANGE FANTASY	Pkt. 10c
ORANGE KING (Florist Strain)	Pkt. 10c
ORANGE SHAGGY	Pkt. 10c

## Calliopsis, A.

CHOICE SINGLE MIXED	Pkt. 10c
DOUBLE MIXED	Pkt. 10c
GOLDEN CROWN	Pkt. 10c

## Candytuft, A.

CRIMSON	Pkt. 10c
FLESH PINK	Pkt. 10c
GIANT HYACINTH	Pkt. 10c
LAVENDER	Pkt. 10c
ALBA—White	Pkt. 10c
MIXED	Pkt. 10c
PERENNIAL (Iberis)	Pkt. 15c

## Canna Seed, P.

MIXED (Plant in February)	Pkt. 25c
---------------------------	----------

## Carnation, P.

GIANT FLOWERING PINK	Pkt. 15c
GIANT FLOWERING FLESH	Pkt. 15c
GIANT FLOWERING ROSE	Pkt. 15c
GIANT FLOWERING SCARLET	Pkt. 15c
GIANT FLOWERING WHITE	Pkt. 15c
GIANT FLOWERING YELLOW	Pkt. 15c
GIANT FLOWERING MIXED	Pkt. 15c
ENGLISH GIANT MIXED	Pkt. 35c
FLORISTS' MIXTURE	Pkt. 25c

## Celosia, A.

EMPRESS	Pkt. 15c
FIRE FEATHER	Pkt. 15c
PLUMOSA MIXED	Pkt. 15c

## Fuchsia, P.

MIXED	20 seeds 35c
-------	--------------

## Gerbera (Transvaal Daisy), P.

GIANT CALIFORNIA HYBRIDS	
MIXED	25 seeds 25c

## Lantana, A.

MIXED	Pkt. 15c
-------	----------



## Lily Seed, P.

CALLA, ALBA MACULATA .....	Pkt. 25c
REGALE .....	Pkt. 15c

## Lobelia, A.

CRYSTAL PALACE COMPACTA .....	Pkt. 15c
SAPPHIRE (Trailing) .....	Pkt. 15c
SPECIOSA .....	Pkt. 15c
WHITE LADY .....	Pkt. 15c
PRIMA DONNA .....	Pkt. 15c

## Marigold, A.

NEVER BEFORE (New)—Mixed shades .....	Pkt. 35c
NEVER BEFORE—Orange and lemon shades .....	Pkt. 35c
GLITTERS (New) .....	Pkt. 25c
FLASH .....	Pkt. 25c
REAL GOLD .....	Pkt. 25c
MAMMOTH MUM .....	Pkt. 25c
SUNKIST .....	Pkt. 15c
SPRY .....	Pkt. 10c
BUTTERBALL .....	Pkt. 15c
CHRYSANTHEMUM FLOWER HYBRIDS .....	Pkt. 15c
DWARF AFRICAN MIXED .....	Pkt. 10c
DWARF DOUBLE HARMONY .....	Pkt. 10c
DWARF FRENCH MIXED .....	Pkt. 10c
GIGANTEA POT O'GOLD .....	Pkt. 15c
GIGANTEA SUNSET GIANTS .....	Pkt. 10c
LARGE AFRICAN LEMON .....	Pkt. 10c
LARGE AFRICAN MIXED .....	Pkt. 10c
LARGE AFRICAN ORANGE .....	Pkt. 10c
MISSION GIANT GOLDSMITH .....	Pkt. 15c
MISSION GIANT YELLOWSTONE .....	Pkt. 15c
NAUGHTY MARIETTA .....	Pkt. 25c
RED HEAD .....	Pkt. 25c
SCARLET GLOW .....	Pkt. 10c
SIGNATA GOLDEN GEM .....	Pkt. 10c
TALL FRENCH MIXED .....	Pkt. 10c

## Petunias, A.

PINK SENSATION .....	Pkt. 50c
BLOOD RED .....	Pkt. 15c
CHEERFUL .....	Pkt. 25c
COLOSSAL SHADES OF ROSE .....	100 seeds \$1.00
DEFIANCE LARGEST FLOWERING .....	Pkt. 25c
ELKS' PRIDE .....	Pkt. 25c
FIRE CHIEF .....	Pkt. 25c
PEACH RED .....	Pkt. 25c
FLAMING VELVET .....	Pkt. 15c
ROSE OF HEAVEN .....	Pkt. 15c
ROSY MORN .....	Pkt. 15c
RUFFLED DOUBLE GIANTS .....	Pkt. 35c
SILVER BLUE .....	Pkt. 15c
THEODOSIA .....	Pkt. 25c
CELESTIAL ROSE .....	Pkt. 25c
KING HENRY .....	Pkt. 25c

## New All Double Petunia

BURPEE ORCHID .....	Pkt. \$1.00
MRS. DWIGHT D. EISENHOWER .....	Pkt. \$2.00
ROSE MARIE .....	Pkt. \$1.00

## Primrose, Hardy, P.

AURICULA MIXED .....	Pkt. 25c
GIANT POLYANTHUS .....	Pkt. 35c
JAPONICA MIXED .....	Pkt. 25c
LUTEA .....	Pkt. 25c
VERIS, POLYANTHUS .....	Pkt. 35c

## Salvia, A.

AZUREA, P. ....	Pkt. 20c
BONFIRE .....	Pkt. 15c
PATENS .....	Pkt. 20c
SPLENDENS .....	Pkt. 15c
BLAZE OF FIRE .....	Pkt. 20c



Aster, Super Giant Los Angeles, Page 20

## Schizanthus, A.

GIANT FLOWERED HYBRIDS .....	Pkt. 20c
------------------------------	----------

## Snapdragon, A.

DOUBLE SNAPDRAGON	
FLORADALE .....	Pkt. 50c
MAXIMUM, RUST PROOF	
ALASKA .....	Pkt. 15c
APPLE BLOSSOM .....	Pkt. 15c
BLACK PRINCE .....	Pkt. 15c
CAMPFIRE .....	Pkt. 15c
INDIAN SUMMER .....	Pkt. 15c
LOVELINESS .....	Pkt. 15c
MAXIMUM MIXED .....	Pkt. 15c
RED CROSS .....	Pkt. 15c
YELLOW GIANT .....	Pkt. 15c
PURPLE KING .....	Pkt. 15c
TETRA MIXED (1/16 oz. \$1.50) .....	Pkt. 25c
GIANT SKYSCRAPER MIXED .....	Pkt. 25c

## Solanum, P.

JERUSALEM CHERRY .....	Pkt. 25c
------------------------	----------

## Stocks, A.

DOUBLE GIANT COLUMN	
CHAMOIS ROSE .....	Pkt. 25c
BALL ROSE PINK .....	Pkt. 25c
BALL DEEP APRICOT .....	Pkt. 25c
BALL WHITE IMPROVED .....	Pkt. 25c
ROYAL PURPLE .....	Pkt. 25c
DOUBLE EARLY GIANT IMPERIAL MIXED .....	Pkt. 10c
BUTTERCUP .....	Pkt. 15c
ELKS' PRIDE .....	Pkt. 15c
GOLDEN ROSE .....	Pkt. 15c
SANTA MARIA .....	Pkt. 15c
IMPROVED LARGE FLOWERING TEN WEEKS MIXED .....	Pkt. 10c
BEAUTY OF NICE MIXED .....	Pkt. 15c

## CUT AND COME AGAIN STOCKS

BRILLIANT .....	Pkt. 15c
HEATHEN BEAUTY .....	Pkt. 15c
SAPPHIRE .....	Pkt. 15c
GIANT PERPETUAL MIXED .....	Pkt. 10c

## Tithonia

TORCH .....	Pkt. 25c
-------------	----------

## Verbenas

LAVENDER GLORY .....	Pkt. 15c
LUCIFER .....	Pkt. 15c
LUMINOSA .....	Pkt. 15c
MAMMOTH STRAIN MIXTURE .....	Pkt. 15c

## Giant Flowering Spencer Sweet Peas

PRICES—Unless noted are uniformly: Pkt. 10c; oz. 35c; ¼ lb. \$1.00; lb. \$3.50.

AVALANCHE  
BONNY BRIAR  
CHEERIO  
CHIEFTAIN  
ECSTASY  
FLAMINGO  
GIGANTEA  
GLENEAGLES  
GRAND SLAM  
LADY MACBETH  
MARY PICKFORD  
MASTERCREAM  
MELODY  
MISS CALIFORNIA  
PINKIE  
POWERSCOURT  
PROLIFIC  
RED SUPREME  
SWEET AFTON  
THE SULTAN  
WELCOME  
WINDSOR BLUE

## Cuthbertson Sweet Peas

This new race of heat resistant Sweet Peas is also outstanding for vigor and extra large flowers. They have long, strong stems.

PRICES are uniformly: Pkt. 10c; ½ oz. 35c; oz. 65c; ¼ lb. \$2.25; lb. \$6.50.

JIMMY (New)—Deep scarlet (Novelty for 1950). Pkt. 20c.

CAROL, clear pink.  
COLINE, scarlet.  
DAVID, bright rose crimson.  
EVELYN, salmon cream pink.  
FRANK G., lavender.  
JESSIE, mauve.  
JANET, white, black seeded.  
KENNETH, crimson.  
KATIE, rose cream pink.  
LOIS, rose pink.  
MARIAN, cream, black seeded.  
TOMMY, blue.  
WILLIAM, pink Picotee edge on white (new).  
MIXED, a blend of all shades.

## Cuthbertson Collection

Our selection with good range of varieties and colors. 6 Pkts. 50c.

### SWEET PEA BLIGHT

Sweet Peas are often injured by a virus disease. Even when in bloom they die quickly. Treat with Carco X. Ask for Carco booklet.

## Giant Spencer Ruffled

Flowers are duplexed, heavily ruffled and frilled.

PRICES—Unless noted are uniformly: Pkt. 10c; ½ oz. 30c; oz. 50c; ¼ lb. \$1.50; lb. \$4.50.

RUFFLED BEAUTY  
RUFFLED BLUE  
BONNIE RUFFLES  
RUFFLED CARMINE  
RUFFLED CRIMSON  
RUFFLED EXQUISITE  
RUFFLED ORCHID  
RUFFLED PINK  
RUFFLED PRIMROSE  
ROYAL RUFFLES  
RUFFLED WHITE  
RUFFLED MIXED

## Early Flowering Spencer

PRICES—Unless noted are uniformly: Pkt. 15c; ½ oz. 30c; oz. 50c; ¼ lb. \$1.75; lb. \$6.00.

BOON  
DAPHNE  
FLORIST BLUE  
FRAGRANCE  
GARDENIA  
MISS SANTA MARIA  
SEQUOIA  
SHIRLEY TEMPLE  
SUSANNA  
TREASURE ISLAND  
WAVES

EARLY SUPER MIXED — Pkt. 10c; oz. 40c; ¼ lb. \$1.25; lb. \$4.25.

## Mixed Sweet Peas

SHOW GROUND MIXTURE — Pkt. 10c; oz. 30c; ¼ lb. 90c; lb. \$3.00.

GILL'S PROGRESSIVE MIXED — Pkt. 10c; oz. 20c; ¼ lb. 65c; lb. \$2.00.

CUPID (Dwarf Mixed)—Pkt. 10c.

### HOME BEAUTIFUL SWEET PEAS

Twelve regular sized packets of Spencer Sweet Peas, our selection of varieties, all different, worth \$1.20, sent Postpaid for 75c. Six Packets, Postpaid, for 40c. These will be chosen to give a good range of color. Do not order this collection based on your own selection.

## Annual Flower Collection

12 Regular Packets worth \$1.35 for \$1.00. Postpaid.

Calendula, Double Mixed .....	\$.10
Calliopsis, Double Mixed .....	.10
Cosmos, Mammoth Early Flowering Mixed.....	.10
Clarkia, Double Mixed .....	.10
Dianthus, Double Mixed .....	.10
Godetia, Tall Double Mixed .....	.10
Larkspur, Supreme Mixed .....	.15
Marigold, Dwarf Double Harmony.....	.10
Helichrysum, Strawflower Mixed .....	.10
Zinnia, Monster Mixed .....	.15
Nasturtium, Dwarf, Finest Mixed.....	.10
Salpiglossis, Large Flowering Mixed.....	.15

\$1.35

### SWEET PEA TALK

Ask for our radio talk on Sweet Peas. There is no charge.

# VEGETABLE SEED

We list these vegetable varieties especially for early gardens, greenhouses and frames. Every year we have a big rush of orders immediately after we issue our Spring Catalog in January. This sometimes causes delays in filling orders which include items needed early. We therefore list herewith varieties usually needed early. For lack of space, descriptions are omitted, however these will be found in our Spring Catalog. We suggest you order these varieties in advance of your main order and have them on hand for early planting. If you do not receive our Spring Catalog, please send your name for our mailing list. This of course is only a suggestion to assist you, and we will do our best to fill orders promptly at any time. **For complete list see our Spring Catalog.**

## Table Beets

Prices, unless noted: Pkt. 10c; oz. 30c; ¼ lb. 70c; lb. \$1.75.

**Detroit Dark Red.**

**Crosby Egyptian.**

**Early Wonder.**

**Extra Early Egyptian.**

**Green Top Bunching.**

**Perfected Detroit.**

**Gardeners Model.** Postpaid. Pkt. 10c; oz. 35c; ¼ lb. 90c; lb. \$2.35.

## Cabbage

Prices, unless noted: Postpaid. Pkt. 10c; ½ oz. 35c; oz. 65c; ¼ lb. \$1.60; lb. \$4.65.

**Early Jersey Wakefield Special.**

**Glory of Enkhuizen.**

**Danish Ballhead.**

**Gill's Oregon Ballhead.** Pkt. 10c; ½ oz. 40c; oz. 70c; ¼ lb. \$1.75; lb. \$5.00.

**Golden Acre.** Pkt. 10c; ½ oz. 40c; oz. 70c; ¼ lb. \$1.75; lb. \$5.00.

**Copenhagen Market.** Pkt. 10c; ½ oz. 40c; oz. 70c; ¼ lb. \$1.75; lb. \$5.00.

**Round Red Dutch or Red Acre.** Pkt. 10c; ½ oz. 45c; oz. 80c; ¼ lb. \$2.00; lb. \$6.00.

**Extra Early Express.** Pkt. 10c; ½ oz. 40c; oz. 70c; ¼ lb. \$1.75; lb. \$5.00.

**Danish Roundhead.** Pkt. 10c; ½ oz. 40c; oz. 70c; ¼ lb. \$1.75; lb. \$5.00.

**Siedl Ballhead.** Pkt. 10c; ½ oz. 45c; oz. 80c; ¼ lb. \$2.00; lb. \$6.00.

## Caulicab

See our Spring catalog for full description of this fine vegetable. **Pkt. 35c; ¼ oz. \$1.25; oz. \$3.50; ¼ lb. \$10.00; lb. \$30.00.**

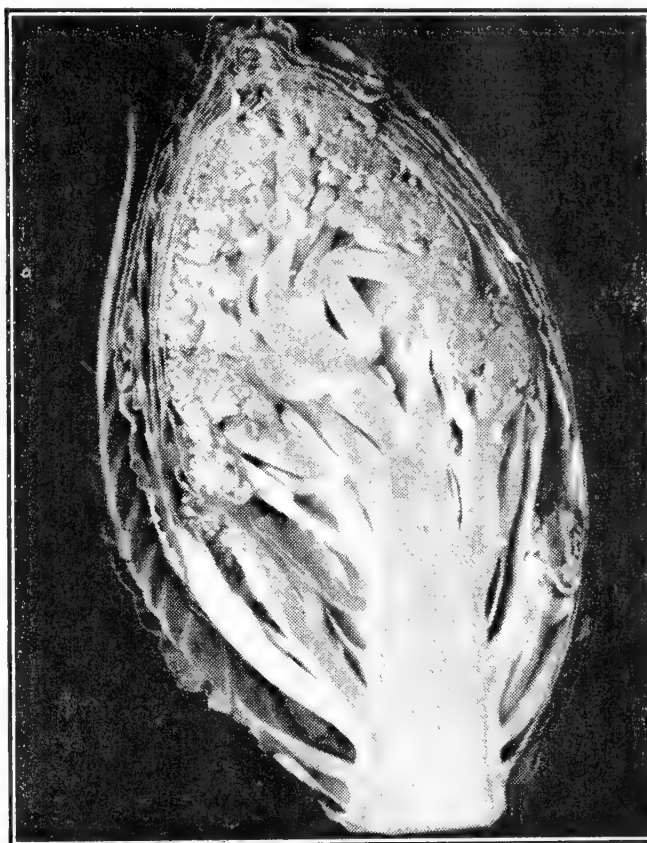
## Cauliflower

Prices are uniformly: Postpaid. Pkt. 15c; ¼ oz. 75c; oz. \$2.85; ¼ lb. \$8.00; lb. \$25.00.

**Super Snowball.**

**Snowball No. 16.**

**Snowdrift.**



New Caulicab, This Page

## Celery

**Utah Jumbo.** Pkt. 15c; ¼ oz. 50c; oz. \$1.35; ¼ lb. \$4.25; lb. \$15.00.

**Improved Utah Jumbo.** Pkt. 20c; ¼ oz. 65c; oz. \$1.60; ¼ lb. \$5.00; lb. \$18.00.

**Summer Pascal.** Pkt. 10c; ¼ oz. 35c; oz. \$1.00; ¼ lb. \$3.50; lb. \$12.00.

**Utah Special.** Pkt. 15c; ¼ oz. 50c; oz. \$1.35; ¼ lb. \$4.25; lb. \$15.00.

**Golden Self Blanching, Tall Strain—** Pkt. 10c; oz. \$1.00; ¼ lb. \$3.50; lb. \$12.00.

**Utah No. 15.** Pkt. 10c; ¼ oz. 35c; oz. \$1.00; ¼ lb. \$3.50; lb. \$12.00.

**Utah 10-B.** Same price as Utah No. 15.

## Green Broccoli

**Medium Calabrese.** Postpaid. Pkt. 10c; ½ oz. 35c; oz. 60c; ¼ lb. \$1.50; lb. \$3.50.

**Early Strain—**Pkt. 10c; ½ oz. 35c; oz. 60c; ¼ lb. \$1.50; lb. \$4.00.

## Brussels Sprouts

**Catskill.** Pkt. 15c; ½ oz. \$1.00; oz. \$1.85; ¼ lb. \$6.00; lb. \$17.50.

**Oregon Special.** Postpaid. Pkt. 10c; ½ oz. 40c; oz. 65c; ¼ lb. \$2.00; lb. \$6.00.

**R. K. Special.** Pkt. 10c; ½ oz. 55c; oz. \$1.00; ¼ lb. \$3.00; lb. \$9.00.

## Egg Plant

**Early Black.** Pkt. 15c; ½ oz. 75c; oz. \$1.25.

**Black Beauty.** Postpaid. Pkt. 10c; ½ oz. 40c; oz. 75c; ¼ lb. \$2.25; lb. \$8.00.

**New Hampshire Hybrid.** Postpaid. Pkt. 15c; ½ oz. 75c; oz. \$1.25; ¼ lb. \$3.00.

## Carrots

Prices, unless noted: Postpaid. Pkt. 10c; oz. 30c; ¼ lb. 85c; lb. \$2.00.

**Gill's Oregon Chantenay.**

**Imperator.**

**Imperator, Long Type.**

**Danver's Half Long, Red Cored.**

**Red Cored Chantenay.**

**Morse's Bunching.**

**Gill's Special Nantes.** Postpaid. Pkt. 10c; oz. 35c; ¼ lb. 95c; lb. \$2.50.

**Table Gem or Amsterdam.** Postpaid. Pkt. 10c; oz. 35c; ¼ lb. 95c; lb. \$3.00.

## Cucumber

**Delcrow.** Postpaid. Pkt. 15c; oz. 50c; ¼ lb. \$1.50; lb. \$3.50.

**Cubit.** Postpaid. Pkt. 10c; oz. 30c; ¼ lb. 95c; lb. \$2.75.

**Marketer.** Prices same as Cubit.

**The Vaughan or Longfellow.** Postpaid. Pkt. 10c; oz. 30c; ¼ lb. 95c; lb. \$2.65.

**Straight Eight.** Postpaid. Pkt. 10c; oz. 30c; ¼ lb. 85c; lb. \$2.65.

**Colorado.** Postpaid. Pkt. 10c; oz. 30c; ¼ lb. 95c; lb. \$2.65.

**Deltus.** Pkt. 10c; oz. 30c; ¼ lb. 95c; lb. \$2.65.

**Burpee's Hybrid.** Postpaid. Pkt. (30 seeds) 25c; ½ oz. \$1.25; oz. \$2.25.

## Mustard

Prices, unless noted: Postpaid. Pkt. 10c; oz. 25c; ¼ lb. 55c; lb. \$1.50.

**Florida Broad Leaf.**

**Fordhook Fancy.**

**Giant Southern Curled.**

**Tender Green.**

**Bok Toy Special (Chinese Vegetable).** Postpaid. Pkt. 15c; ½ oz. \$1.25; oz. \$2.00; ¼ lb. \$7.00; lb. \$25.00.

## Lettuce

**Loose Leaf Varieties.** Prices, unless noted: Postpaid. Pkt. 10c; oz. 30c; ¼ lb. 85c; lb. \$2.10.

**Oak Leaf.**

**Grand Rapids.**

**Prizehead.**

**Bronze Beauty.** Pkt. 15c; ½ oz. 35c; oz. 65c.

## Lettuce, New York Strains

Prices, unless noted: Postpaid. Pkt. 10c; ½ oz. 25c; oz. 40c; ¼ lb. \$1.00; lb. \$3.00.

**Improved B.**

**New York Supreme.**

**New York No. 12.**

**New York "B" (No. 199).**

**Imperial "44."**

**Imperial "152."**

**Cornell 456.** Pkt. 10c; ½ oz. 40c; oz. 65c; ¼ lb. \$1.50; lb. \$4.00.

**Great Lakes.** Postpaid. Pkt. 10c; ½ oz. 40c; oz. 65c; ¼ lb. \$1.50; lb. \$4.50.

**Early Great Lakes.** Pkt. 15c; ½ oz. 45c; oz. 75c; ¼ lb. \$1.75; lb. \$4.75.

**Pennlake.** Pkt. 15c; ½ oz. 45c; oz. 75c; ¼ lb. \$1.75; lb. \$4.50.

**Premier Great Lakes.** Prices same as Pennlake.

**Summer Great Lakes.** Pkt. 15c; ½ oz. 45c; oz. 75c; ¼ lb. \$1.75; lb. \$5.00.

**Late Great Lakes.** Pkt. 15c; ½ oz. 50c; oz. 90c; ¼ lb. \$2.00; lb. \$6.00.

**Improved 615 (No. 101).** Pkt. 10c; ½ oz. 30c; oz. 50c; ¼ lb. \$1.50; lb. \$3.50.

## Parsley

**Triple Moss Curled.** Pkt. 10c; oz. 20c; ¼ lb. 50c; lb. \$1.50.

**Plain.** Same prices as Triple Moss Curled.

## Onions

Prices, unless noted: Postpaid. Pkt. 10c; ½ oz. 40c; oz. 75c; ¼ lb. \$2.00; lb. \$5.50.

**Ioglobe.**

**Early Yellow Globe.**

**Walla Walla Sweet.**

**Large Red Wethersfield.**

**Crystal Wax Bermuda (White).**

**White Portugal or Silverskin.**

**Select Southport White Globe.**

**White Lisbon.**

**Select Oregon Yellow Globe Danvers.**

**Long White Bunching (Evergreen).**

**Downing's Yellow Globe.**

**White Sweet Spanish.**

**Utah Sweet Spanish.** Pkt. 10c; ½ oz. 35c; oz. 65c; ¼ lb. \$2.00; lb. \$6.00.

**White Globe (Green Bunching).** Pkt. 10c; ½ oz. 35c; oz. 65c; ¼ lb. \$1.50; lb. \$4.25.

## Peppers

**Oakview Wonder.** Postpaid. Pkt. 10c; ½ oz. 60c; oz. \$1.00; ¼ lb. \$3.00; lb. \$9.00.

**California Wonder.** Postpaid. Pkt. 10c; ½ oz. 60c; oz. \$1.00; ¼ lb. \$3.00; lb. \$8.50.

**Long Red Cayenne.** Postpaid. Pkt. 10c; ½ oz. 30c; oz. 50c; ¼ lb. \$1.60.

**Harris Early Giant.** Pkt. 10c; ½ oz. 60c; oz. \$1.00; ¼ lb. \$3.25; lb. \$9.00.

**Avalon (New).** Pkt. 15c; ¼ oz. 85c; ½ oz. \$1.50; oz. \$2.50.

**Pimiento.** Pkt. 10c; ½ oz. 30c; oz. 50c; ¼ lb. \$1.60.

**Floral Gem.** Pkt. 10c; ½ oz. 60c; oz. \$1.00; ¼ lb. \$3.25; lb. \$10.00.

## Radish

Prices, unless noted. Postpaid. Pkt. 10c; oz. 20c; ¼ lb. 40c; lb. \$1.00. Write for quantity prices.

**Comet.**

**Sparkler White Tip.**

**Early Scarlet Globe.**

**Cavalier.**

**Crimson Giant.**

**Bicolor.**

**White Icicle.**

**Philadelphia White Box.**

**Half Long Red, White Tipped.**

**Pernot (Fire Cracker Radish).** Pkt. 15c; oz. 25c; ¼ lb. 55c; lb. \$1.25.

**Cherry Belle.** Pkt. 15c; oz. 25c; ¼ lb. 55c; lb. \$1.25.

**Nerima (Japanese Long).** Pkt. 15c; ½ oz. 35c; oz. 60c; ¼ lb. \$1.65; lb. \$4.50.

## Garden Peas

Prices, unless noted: Postpaid. Pkt. 10c; ½ lb. 25c; lb. 45c; For 4th Zone and beyond, lb. 50c. Not prepaid: lb. 40c; 5 lbs. of one variety @ 35c lb.; 10 lbs. @ 30c lb. Write for prices on quantities.

### (DWARF VARIETIES)

**Morse's Progress No. 9.**

**Laxton's Progress.**

**Little Marvel.**

**Giant Stride.**

**Improved Stratagem.**

**Pacific Market (No. 40).**

### PEAS (TALL VARIETIES)

**World's Record.**

**Surprise.**

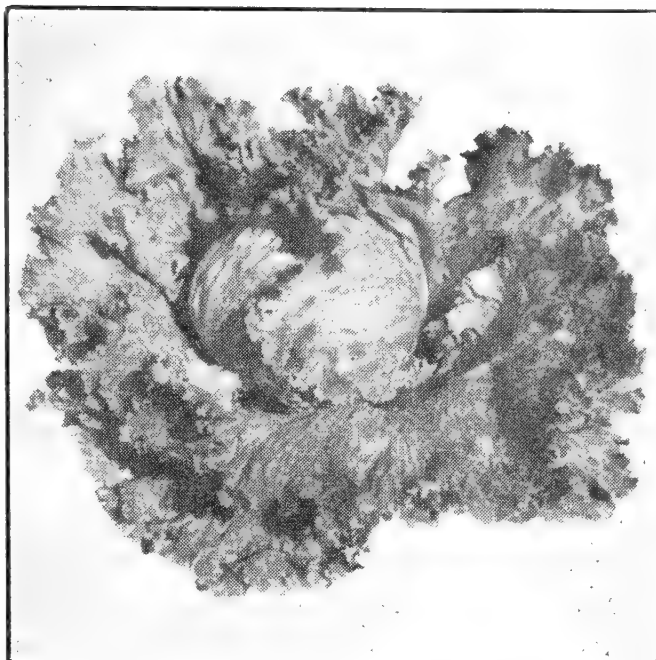
**Gradus.**

**Improved Telephone** (Dark Green or Alderman strain).

**Thomas Laxton.**

**Alaska.**

**Mammoth Melting Sugar.** Pkt. 10c; ½ lb. 30c; lb. 50c. Postpaid.



Lettuce, Pennlake, Page 24

## Spinach

Prices, unless noted: Postpaid. Pkt. 10c; oz. 20c; ¼ lb. 35c; lb. 85c. Not Prepaid: lb. 70c; 10 lbs. @ 65c lb. Write for prices on quantities.

**Giant Leaf.**

**Northland.**

**Improved Thick Leaf or Viroflay.**

**Long Standing Savoy.**

**Giant Cavallius.** Pkt. 15c; oz. 50c; ¼ lb. \$1.25; lb. \$3.00.

**Advance.** Pkt. 10c; oz. 25c; ¼ lb. 45c; lb. 90c.

## Tomatoes

Prices, unless noted. Postpaid. Pkt. 10c; ½ oz. 45c; oz. 85c; ¼ lb. \$2.10; lb. \$6.75.

**John Baer.**

**The Pritchard, Certified.**

**Scarlet Dawn.**

**Break o'Day.**

**Bonny Best.**

**Dwarf Stone.**

**Rutgers.**

**Stokesdale, Certified.**

**Master Marglobe.**

**Pear Tomatoes, Red or Yellow.**

**Gill's All Purpose.** Postpaid. Pkt. 15c; ¼ oz. 80c; ½ oz. \$1.50; oz. \$2.35; ¼ lb. \$6.50; lb. \$15.00.

**Victor.** Pkt. 15c; ¼ oz. 40c; oz. \$1.25; ¼ lb. \$4.00.

**Jubilee.** Pkt. 15c; ½ oz. 75c; oz. \$1.25; ¼ lb. \$4.00.

**Seattle Best of All.** Pkt. 10c; ½ oz. \$1.00; oz. \$1.65; ¼ lb. \$4.50; lb. \$12.50.

**Valiant.** Pkt. 10c; ½ oz. 45c; oz. 85c; ¼ lb. \$2.75; lb. \$8.25.

## TOMATOES—Continued

**Improved Pepper Tomato.** Pkt. 10c; ¼ oz. 35c; ½ oz. 60c; oz. \$1.00; ¼ lb. \$3.50.

**Improved Wasatch Beauty.** Pkt. 10c; ¼ oz. 60c; ½ oz. \$1.00; oz. \$1.60; ¼ lb. \$4.00; lb. \$12.00.

**Gill's Selected Earliana.** Pkt. 10c; ¼ oz. 25c; oz. 90c; ¼ lb. \$2.75; lb. \$8.50.

**Hill Selected Earliana.** Pkt. 25c; ¼ oz. \$1.25; ½ oz. \$2.25; oz. \$4.00.

**Beef Steak.** Pkt. 10c; ¼ oz. 35c; ½ oz. 65c; oz. \$1.00; ¼ lb. \$3.25.

**Washington Forcing.** Pkt. 25c; ⅛ oz. 70c; ½ oz. \$2.50; oz. \$4.00; lb. \$42.00.

**Early Chatham.** Pkt. 15c; ¼ oz. 45c; oz. \$1.25; ¼ lb. \$4.00.

**San Marzano** (Italian Paste Tomato). Pkt. 15c; ¼ oz. 40c; oz. \$1.25; ¼ lb. \$3.75.

**Porter Tomato (New).** Pkt. 15c; ¼ oz. \$1.00.

**Ponderosa.** Pkt. 10c; ¼ oz. 35c; ½ oz. 65c; oz. \$1.00; ¼ lb. \$3.25.

**Yellow Ground Cherry, or Husk Tomato.** Pkt. 10c; ¼ oz. 40c; ½ oz. 65c; oz. \$1.00; ¼ lb. \$3.50.

## Turnips

Prices, unless noted: Postpaid. Pkt. 10c; oz. 20c; ¼ lb. 45c; lb. \$1.25.

**Note**—Milan varieties may be planted up to October 1, producing medium sized high quality turnips.

**Extra Early Purple Top Milan.** Pkt. 10c; oz. 25c; ¼ lb. 65c; lb. \$1.50.

**Extra Early White Milan.** Pkt. 10c; oz. 25c; ¼ lb. 65c; lb. \$1.50.

**Purple Top White Globe.**

**Early Snowball.**

**White Egg.**

**Shogoin (Foliage Turnip).**

### YELLOW FLESHED TURNIPS

**Orange Jelly or Golden Ball.**

## Garlic

Garlic gives the best results on the Pacific Coast when planted in November. Available in fall or spring.

**SILVERSKIN**—Large, late keeping variety. Postpaid, ½ lb. 35c; lb. 60c. Not prepaid, 5 lbs. @ 55c lb. Write for prices on quantities.

**LARGE FRENCH**—An early, large sort grown for summer sales. This variety is suitable for early summer use and sales but is not a good winter keeper. ½ lb. 40c; 1 lb. 70c; postpaid.

## Mushroom Spawn

Offered in cartons or bricks. One carton of bottle spawn sufficient for 40 sq. ft. of bed. Produces fine white mushrooms. Postpaid. Per carton \$1.20. Culture bulletin with each sale.

## FERTILIZERS

### Commercial Fertilizers

WRITE FOR PRICES, STATING QUANTITY.

**NOTICE**—Readjustment in changing prices prevent us from quoting prices here. Please write us for prices, stating quantities desired. All prices are FOB our shipping point and purchaser must pay transportation charges. The analysis is listed by numbers: the first number is nitrogen, the second phosphate, the third potash. We do not ship fertilizers C.O.D. Ask for our current price list.

### Organic Fertilizers

**RAW BONE MEAL**—A rather slow acting fertilizer used for many purposes, especially fruit, shrubs and bulbs. Approximately 4-23-0.

**COTTON SEED MEAL**—A valuable organic fertilizer which many growers use in place of fish. Important for acid loving plants and shrubs.

**SHEEP GUANO**—Usually runs around 2-1-2. Dry ground sheep manure in sacks. High in humus, and fine for general use.

### Fertilizers in Mixtures

Write for prices, stating quantities. Order by analysis numbers listed below.

We can generally supply commercial mixtures with the following analysis:

6-10-4    3-10-20    5-10-10    3-10-10

### Mineral Fertilizers

Write for prices, stating quantities.

**POTASH, MURIATE**—Produces color, substance and flavor. 50 to 60% potash.

**POTASH, SULPHATE**—Also valuable for color, substance and flavor. 50%.

**SUPERPHOSPHATE**—We offer 18% grade.

**NITRATE OF SODA**—14 to 16 nitrogen. Being soluble in water it is valuable for winter and early spring fertilizing on any crop for quick leaf growth.

**SULPHATE OF AMMONIA**—This runs very high in nitrogen. Similar use to that of Nitrate of Soda.

**AMMONIUM NITRATE**—Approximately 34% nitrogen.

**AMMONIUM PHOSPHATE**—About 11% nitrogen, 48% phosphate, also 16-20

### Other Items

**LAND PLASTER OR GYPSUM**—This contains sulphur in available form and is valuable for legumes and general crops.

**LIME, HYDRATED**—Especially valuable for extremely acid soils.

### Vigoro Fertilizer

**VIGORO**—It is the ideal plant food for lawns, flowers, gardens, shrubbery and trees. It is easy to apply; results are quick and certain.

Clean, dustless, weedless, and odorless, Vigoro is not to be compared with any other plant food you have ever known. Write for prices. Offered in weighed packages: 1-5-10-25-50-100 lbs.

# Asparagus Roots

We can fill orders for planting in late October and November. Plant as soon as possible after being received. Do not try to harvest any asparagus the first season after planting and only a very light cutting the second year. Send for our bulletin on asparagus culture.

**MARY WASHINGTON**—Heavy producer with large green stalks of fine quality. Practically immune to rust and other diseases. This is now the standard variety for home or market production. No. 1 grade, doz. 50c; 50 for \$1.60; 100 for \$2.50. Postpaid. Not prepaid, 1000 @ \$13.50. Write for prices on quantities.

**PARADISE**—This fine new variety has the same rich green color and delicious mild flavor as the Mary Washington. It is very early, also resistant to rust and a much heavier yielder. A worthy new sort of high table quality. No. 1 grade, doz. 65c; 50 for \$1.90; 100 for \$2.75. Postpaid. Not prepaid, 1000 @ \$15.00.

## Onion Sets

**BOTTOM SETS**—Small onions grown from seed planted too thickly to reach mature size. They produce green onions in a short time, or if left to grow, they will produce nice, large dry onions earlier than those grown from seed. It is best to use the smallest sets to provide dry onions and larger ones for green onions. Onion sets may be planted in September and up to October 15th. These will produce green onions available most of the winter. They can be planted at intervals from early Spring until Fall, thus providing fresh green onions all season. Postpaid, ½ lb. 25c; lb. 40c; 3 lbs. \$1.00. Add 10% for 5th zone and beyond. Not prepaid, 5 lbs. @ 30c per lb.; 10 lbs. @ 27c per lb.

**YELLOW MULTIPLIER** or **SHALLOTS**—Popular perennial that multiplies each year. Desirable for an early crop. Brown skin, mild, white flesh. Postpaid, ½ lb. 30c; lb. 55c.

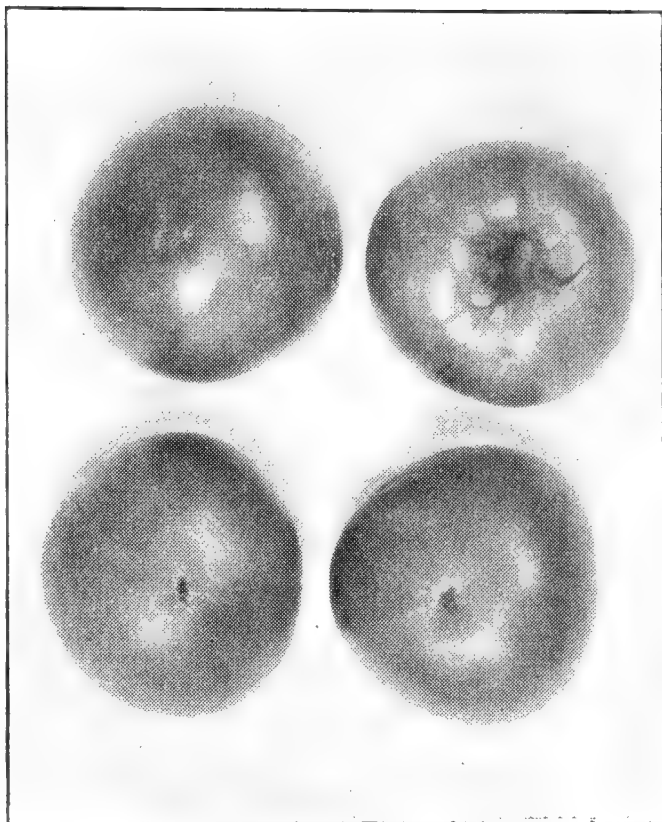
**EGYPTIAN** or **TOP SETS**—Popular, old fashioned perennial onion. Often planted along a fence. Available for green onions most of the fall and spring. It is best to plant them in the early fall, however, they can be set out in the early spring. Postpaid, ½ lb. 35c; lb. 65c.

**POTATO ONION SETS**—The old-fashioned onion sets are seldom available. They are grown in the spring and dug and cured in the latter part of August and used for dry onions. Postpaid, ½ lb. 35c; lb. 65c.

## Rhubarb

Rhubarb can be planted in October and November, depending upon your locality. Fall planting enables you to have quicker results than spring planting. We offer good, strong divisions with good eyes to start the crowns. For quantities write for prices. Ready for shipment about November 1. Prices quoted are for good divisions. Do not pull any stems the first year after planting. Space 2½ feet apart in the rows and 6 feet between rows. If planting is deferred until Spring set them out before May 1. If you are unable to set them out when received plant in moist sand until ready. If the root divisions are planted in soil that is too dry they may fail to grow. On all rhubarb prices add 10% for Zone 4 and beyond.

**RIVERSIDE GIANT RHUBARB**—Extra large stems of bright crimson. One of the best producers for market. High quality. Each 45c; 3 for \$1.25; doz. \$4.25.



Tomato, Gill's All-Purpose, Page 25

**CHIPMAN'S CANADA RED**—This variety has the reddest interior in the stems of any kind yet introduced. The exterior of the stems are bright crimson. The interior is really red throughout the whole length of the stem. Not a faint pink but a real red. Somewhat sweeter than most varieties. Each 60c; 3 for \$1.50; doz. \$5.75. Postpaid.

**MCDONALD**—A splendid new rhubarb. Very productive of extra large stems with bright crimson exterior and better interior color than most of the older varieties. Each 60c; 3 for \$1.50; doz. \$5.75. Postpaid.

### VALENTINE, New Rhubarb

The last word in fine rhubarb. Developed by Ontario Experiment Station, Canada. Best of the new "all-red" varieties. Official report on Canadian Cooking Tests of 25 leading varieties: "Valentine sauce rated highest. Color an even, deep bright red. Texture: smooth and tender. Flavor: pleasing with slightly tart after taste. All testers accorded Valentine the highest standard." Valentine has the richest color, the best flavor, the largest stalks, and the fewest seed stalks, of all the new red sauce producers. Larger than Chipman's and equally red inside. It seldom sends up a seed stalk. Each 80c; 3 for \$2.25; doz. \$8.00.



Does not wear off. Rust and weather proof. Package of 24 labels for 30c. Postpaid.

## Everbearing Strawberries

With the coming of the large, fine flavored, rich colored everbearing varieties there has been a greater interest in growing strawberries in the home gardens. They can be planted in October and early Spring. Always select a well drained location convenient for watering the plants during the summer production. We supply healthy clean plants.

**Note: Read Before Ordering—**Because of distance and delay from inspections, sale of strawberry plants will be limited to the states of Oregon, Washington and Idaho. Exceptions will be made on lots of 50 or more when shipped by Express. Plants will not be sent C.O.D. Payment should accompany the order.

**NEW RICH RED (Everbearing) —** Large, solid, rich-red throughout fruit. Planted in early Spring, will bear in June, through Summer, into Fall. Heavy producer; excellent for table and freezing. In our trials this season this berry looks very promising. A strong grower, loaded with blossoms, green and ripe berries. Excellent flavor and striking appearance. **This variety patented and Trade Marked. Postpaid. Doz. \$2.95; 25 for \$5.00; 50 for \$8.50; 100 for \$15.00.**

**ROCKHILL—**Large bright berries produced in quantities all Summer and Fall. This variety makes very few runners and most of the plants are secured by dividing up the one-year-old-plants. This has the advantage of eliminating the second rate producers. Many people believe that the Rockhill berry should not make runners, however this is not true. If given plenty of fertilizer and water they will make some runners and these are ideal for setting out. **Postpaid. Doz. \$1.25; 50 for \$4.60; 100 for \$8.60.**

**NEW STREAMLINER —** A variety of delicious quality, producing heavy crops of large berries. This berry originated in Oregon and has made quite a sensation. It bears throughout the season from Spring until late Fall. **Postpaid. Doz. \$1.20; 50 for \$4.35; 100 for \$7.75.**

**MARSHALL—**Standard type, not everbearing. One of the best for market and home use. Large, dark red fruit with deep red clear through the berries. Exceptionally fine quality. **Doz. 65c; 50 for \$2.10; 100 for \$3.95. Postpaid. Write for quantity prices.**

## Flowerite

A sterile growing medium used for seedling germination, propagation of cuttings, soil improvement, transplanting, potted plants, mulching, etc.

1 Cu. Ft. (Wgt. 12 lbs.) ..... \$1.00—Postage Extra  
2 Bu. (28 lbs., about 2½ cu. ft.) \$1.60—Postage Extra  
3 Cu. Ft. (Wgt. 36 lbs.) ..... \$1.80—Not Prepaid  
4 Cu. Ft. (Wgt. 48 lbs.) ..... \$2.25—Not Prepaid

1 Cu. Ft. and 2 Bu. sizes can be sent by parcel post, but the 3 Cu. Ft. and 4 Cu. Ft. must be sent by truck, rail freight or express, as the packages are too large for mailing. Flowerite is very light in weight.

## GARDEN SUPPLIES

Extra postage required on Canadian Orders and beyond 4th Zone.

(Due to present conditions, it is necessary for us to quote the miscellaneous items subject to market changes.)

### Twist-Ems

Help you to support plants QUICKLY, NEATLY, PERMANENTLY. Say "goodbye" to unsightly twine and raffia, to needless work with shears.

**TWIST-EMS —** Strong, dark-green invisible tapes with wire reinforcement—protects stems, permanently supports annuals, perennials, vines, shrubs and vegetables. We can supply 7", 12" and 16" in bulk. Please write stating size and quantity. **Box of 100, 8-inch size, 30c. Postpaid.**

### Wood Plant Bands

2½x2½x3". Knocked down. **Postpaid to 4th zone only. Extra beyond. 100 for \$1.00; 500 for \$2.50; 1000 for \$4.50.** Write for quantity prices. We can also furnish stitched Bands and other sizes.

### Painted Nursery Labels

3½" Wired Nurs. Labels	5" Pot Labels
50 for 40c Postpaid	50 for 35c Postpaid
100 for 65c Postpaid	100 for 50c Postpaid
500 for \$2.00 Not Prepaid	500 for \$1.90 Not Prepaid
(Wgt. 3 lbs.)	(Wgt. 3 lbs.)
1000 for \$3.50 Not Prepaid	1000 for \$3.25 Not Prepaid
(Wgt. 6 lbs.)	(Wgt. 5 lbs.)
4" Pot Labels	6" Pot Labels
50 for 30c Postpaid	50 for 35c Postpaid
100 for 50c Postpaid	100 for 55c Postpaid
500 for \$1.75 Not Prepaid	500 for \$2.25 Not Prepaid
(Wgt. 2 lbs.)	(Wgt. 3 lbs.)
1000 for \$3.00 Not Prepaid	1000 for \$3.75 Not Prepaid
(Wgt. 4 lbs.)	(Wgt. 6 lbs.)

### Waterproof Marking Pencils

**POSTPAID. 20c each; 6 for \$1.00.**

### Garden Gloves

**WASHABLE LEATHER GLOVES —** Stay soft after washing. Ladies' sizes, 7, 7½ and 8. **Postpaid: \$1.65.** Men's sizes, 9, 9½ and 10. **Postpaid: \$2.00.**

**LADIES' GARDEN DOFF & DON GLOVES—** Rubberized with flannel lining. Sizes: small, medium, and large. **Postpaid: \$1.15.**

### Garden Books

**Garden Flowers in Colors, by Daniel J. Foley. Postpaid: \$3.00.**

**Sunset—Visual Garden Manual. Postpaid: \$1.65.**

**Sunset—Flower Garden Book. Postpaid: \$2.15.**

**Sunset—Vegetable Garden Book. Postpaid: \$1.65.**

**Handbook of Practical Pruning. Postpaid: 30c.**

**National Grange History. Postpaid: \$3.50.**

### Force's Mole Killer

Pellets to be placed in the runways. 85-pellet size, 65c; 185 pellet size, \$1.10. A poison, so be careful about children.

### Mole Traps

**Victor MOLE TRAPS—Postpaid to 4th zone: \$2.15 each. Extra postage beyond 4th Zone.**

### Soil Thermometers

For testing soils. **Postpaid: \$1.90.**



## Miller's Garden Booster

For house plants, flower boxes, roses and shrubs. Stimulates quick rooting and rapid growth. It supplements organic humus compost, rounding out complete plant feeding program. Dilute powder with water. Postpaid. 4 oz. 30c; 1 lb. 70c; 2 lbs. \$1.00; 5 lbs. \$1.85.

## Miller's Garden Compost Maker

Prices POSTPAID to Fourth Zone Only. Converts weeds, leaves and garden rubbish into valuable organic humus fertilized. Postpaid. 5 lbs. \$1.35; 25 lbs. \$5.15.

## Corsage Kits

Contains ribbon, tape, wire pins, stems and leaves, sufficient for a number of corsages. Postpaid: \$1.75.

## GRO-QUICK ELECTRIC SEED BED HEATER

SEED UP IN 30 HOURS  
ROOT CUTTINGS IN 6 DAYS  
CUT GERMINATION TIME BY 2/3  
TRANSPLANT 2 WEEKS SOONER



Above user reports show what GRO-QUICK HEATING CABLE will do. For hotbeds, cold frames.

J40A	40' cable & thermo. for 1 sash	\$ 6.75
S80A	for double sash bed (36 sq. ft.)	9.00
J40	40' 200 watt cable only.....	2.25
S80	80' 400 watt cable only.....	4.50
AT	Air Thermostat — 1000 watts	4.50
BT	Bulb Thermostat — 3500 watts	15.00

### NO FROZEN PIPES

#### GRO-QUICK Electric HEATING CABLE

Prevent freezing at sub-zero. A permanent solution. One cable wrap per ft. of pipe or bury with pipe. Any one can install. Uses but little house current. Order shortest cable possible for your length of pipe — prepaid.

A6	15 w. for 1 to 3 ft. pipe	\$1.00
B12	30 w. for 3 to 6 ft. pipe	\$1.80
M26	60 w. for 6 to 12 ft. pipe	\$2.80
J56	140 w. for 12 to 25 ft. pipe	\$3.00
S112	280 w. for 25 to 50 ft. pipe	\$6.00
FAT	35° thermostat with pilot lt.	\$4.50
Wrap-on Insulation per 12' of pipe		\$1.00

## Sphagnum Moss

Has many uses such as germinating seeds, building up soil mediums, and its value is based on the high absorbent and water holding capacity, due to its sponge-like texture. It is claimed that no "damping-off" occurs when using this medium. Price, postpaid: Dry material, 75c per lb.

## Cyclone Seeders

Small crank seeders; sows any kind of seed; adjustable. Postpaid to and including 4th zone: \$4.60. Extra postage beyond.

### REASONABLE PRICES

Our prices are reasonable considering the quality, also increases in transportation, labor and other costs.

## Use Our "Easy to Subscribe" Magazine Service

As a special service to our customers, we have enclosed an order blank in this catalog to make it easy for you to order Magazines—the Farm Journal and Farmer's Wife, Pathfinder, American Poultry Journal, and a Special Club Offer of Farm Journal and Farmer's Wife, American Poultry Journal, American Fruit Grower and Breeder's Gazette.

The coupon will save you time, trouble and expense, and assure you of safe, prompt service. Merely check the magazines you want and mail coupon together with check, money order, or cash, covering the subscription prices of the magazines you order for yourself, your family and friends. Mail subscription direct to publisher.

## Carco X



Recommended to control Peach Leaf Curl—Bulb Treatment before planting, such as Daffodils, Gladiolus, etc. Also to control Ants, Termites, Slugs, Wire Worms, Root Maggots, Carrot Worm, Tent Caterpillars and Strawberry Root Weevil. A complete liquid spray. Mix with water according to directions for flowers, vegetables, trees,

shrubs and lawn. Directions with each order.

Mailed postpaid: 1/2 Pint \$1.20; Pint \$1.75; Quart \$2.85; Gal. \$6.45; 5 Gal. \$25.00. Express Collect. One gallon CARCO-X makes up to 200 gallons of spray. Non-poisonous.



## Rubber Knee Pads

for weeding, planting, working in the garden or kitchen. They find a ready sale, indicating general satisfaction.

Price: \$2.50 per pair. Postpaid to 4th Zone.

## Spergon Gladiolus Dust

A mixture of Spergon and DDT. To control thrip and corm decay on Gladiolus. This should be dusted on the dry bulbs for storage or before planting. It may also be used on Tulips, Narcissus and Iris. Postpaid. 2 oz. 25c; 1 lb. \$1.70.

## Spergon

Valuable disinfectant which is rated as non-poisonous and especially valuable for peas and beans. It is recommended where Nitragin is used, as it does not injure the germ. Dry Dust. Postpaid. 1 oz. 25c; 5 oz. \$1.05; 1 lb. \$2.45. Wettable Powder, 4 oz. 55c; 1 lb. \$1.45.

## Semesan

Prices POSTPAID to Fourth Zone Only.

SEMESAN—A general disinfectant for vegetable and flower seeds or bulbs, and certain plant diseases. Postpaid. 1/3 oz. 20c; 2 oz. can 65c; 12 oz. can \$2.60.

## Rootone

### "THE HORMONE POWDER"

Prices Postpaid to Fourth Zone only.  
Postpaid.  $\frac{1}{4}$  oz. pkt. 25c; 2 oz. jar \$1.00;  
1 lb. can \$5.25. No solution, no measuring,  
just dust and plant. The 2 oz. jar  
treats up to 3000 cuttings.

## Transplantone

**HORMONE POWDER**—Very valuable  
in transplanting. Stimulates the roots  
of plants, shrubs and trees. **Postpaid.**  
 $\frac{1}{2}$  oz. pkt. 25c; 3 oz. can \$1.05.

## Fruitone

**HORMONE SPRAY**—Aids in setting  
fruit. For stopping premature drop of  
fruits, flowers and leaves. Used on Holly  
to prevent leaf drop. **Postpaid.**  $\frac{2}{5}$  oz.  
25c; 2 oz. \$1.05.

## Pruning Shears

No. 609—Wiss Pruner. \$3.20 **Postpaid**  
to 4th Zone.

## Atlas Fertilizer Emulsion

A perfect plant food derived from fish.  
A tablespoonful to one gallon of water.  
Especially suitable for Begonias and  
Fuchsias, and other house plants. **Post-**  
**paid.** 4 oz. 45c; pints \$1.15; quarts \$1.90.  
Extra postage beyond 4th Zone.

## Grafting Wax

**Postpaid:**  $\frac{1}{4}$  lb. 35c;  $\frac{1}{2}$  lb. 75c; 1 lb.  
\$1.35.

## Treeheal

For treating wounds, scratches, defects  
on fruit and shade trees. Also used after  
pruning. **Postpaid:** 15 oz. 55c; quart 85c.  
Extra postage beyond 4th Zone.

## Gat Sprayers

For spraying Sulphate of Ammonia,  
Nitrate of Soda and Flo Morcrop. At-  
taches to garden hose and fits any stand-  
ard fruit jar. **Postpaid** \$1.90.

## Zehrunge 2, 4, 5-T Blackberry Vine Killer

Pint size will treat 800 sq. ft. **Postpaid:**  
Pints \$2.10; Quarts \$3.60. Extra postage  
beyond 4th Zone.

## Zehrunge IPC Grass Killer

For the control of perennial grasses,  
such as Quack, Johnson and Bermuda  
Grasses. **Postpaid:** Pints \$1.75; Quarts  
\$3.10. Extra postage beyond 4th Zone.

## Hyponex



Simply dissolve and water  
all your houseplants, garden  
flowers, vegetables, shrubs or  
lawn. Produces stronger plants,  
more and larger flowers and  
fruit. Excellent for starting  
seedlings, cuttings, transplants.  
Clean, odorless. Won't burn  
foliage or roots if used as  
directed. Contains all nutri-  
tional elements complete and  
balanced—plus vitamin B1—  
instantly available. Results sure.

**Prices POSTPAID:** 1 oz. 10c; 3 oz. 25c;  
7 oz. 65c; lb. \$1.20. Ask for prices on  
commercial sizes.

## Tobacco Sprays

BLACK LEAF "40" in liquid form.  
**Postpaid:** 1 oz. 40c; 5 oz. \$1.15; 1 lb. \$2.65;  
2 lb. \$4.40.

## Gift Certificates

These certificates are available in any  
amount desired for orders on merchan-  
dise listed in this catalog. When used  
for gifts they are very satisfactory since  
the recipient can select their choice of  
items. Send us the amount you wish and  
we will mail them promptly.

## Rose Bushes

We offer a list of boxed roses in  
standard and new varieties. This list is  
revised from time to time. If interested  
write for the list.

## Ortho Products

**ORTHOICIDE SOIL FUMIGANT**—Contains the  
remarkable new Lindane. For use against cabbage  
maggot, onion maggot, centipedes. **Postpaid.** 4 oz.  
55c; Pint \$1.75.

**ORTHORIX SPRAY**—Astounding new fungicide  
for year round use. Controls mildews, rose mil-  
dew, Peach Leaf Curl, San Jose scale and many  
other plant pests. For both foliage and dormant  
spraying of flowers, fruits, ornaments and ber-  
ries. Also for soil treatment. **Postpaid.** Pints \$1.00;  
Quarts \$1.60; Gals., ask for prices.

**VOLCK OIL SPRAY**—For general garden use  
against scale insects, red spider, mites, etc. **Post-**  
**paid.** 4 oz. 40c; Pint 95c; 31 oz. \$1.55; Gals.—Ask.

**ORTHO SPRAY SETS**—Contains 4 oz. Orthorix  
Spray and 4 oz. Isotox. Suitable for roses, flowers  
and vegetables. **Postpaid.** \$1.50 each.

**TRIOX (An Arsenical Weed Killer)**—For use  
on driveways, paths, etc. Prevents plant growth  
for 1 to 2 years. **Postpaid.** 1 Qt. \$1.30; Gals.—Ask.

**BORDO MIXTURE**—A prepared Bordeaux Mix-  
ture used to control fungus diseases, such as  
Peach Leaf Curl, Peach Blight and Pear Scab.  
**Postpaid.** 1 lb. 85c.

# HIGH GRADE LAWN GRASS

**WRITE FOR PRICES ON QUANTITIES.** We supply grasses for golf courses and other large planting. We will gladly quote you. All prices quoted are subject to market change without notice.

We specialize in high-grade lawn grass seed. During the past few years, we have supplied lawn seed for some of the largest institutions in the Pacific Northwest. Whether it is a small lawn or a large one, we can supply the seed and we will be glad to quote you for quantities either on mixtures or separate grasses. Many of the lawn grass mixtures on the market contain rye grass seed. We consider rye grasses too coarse and too rapid of growth to be included in mixtures and therefore do not use them in our mixtures. In estimating the ground to be planted figure on one pound to 300 square feet of surface. If interested in lawns, write for free bulletin on "Lawn Culture" by Ray W. Gill.

In Western Oregon, Washington and California, September and October are ideal for sowing lawns. There is more moisture and annual weeds are killed by winter frosts. Be careful to plant early enough so that the roots will be established before hard frost might lift and break off the young roots.

**GILBRO SPECIAL**—This super mixture is composed of the finest bladed grasses which are selected on account of their great endurance. It will make a soft velvety lawn of uniform texture and appearance. All varieties in this mixture tolerate acid soils, thus they respond rapidly with acid fertilizers which in turn reduce the weed menace. We have many reports from our customers, who are highly pleased with this mixture. It is adapted to shade or sun. If white clover is desired in the mixture please mention when ordering. This mixture contains 30% creeping bent, making it necessary to ask the following prices: **Postpaid. Lb. \$1.50. Not prepaid, 5 lbs. or more @ \$1.45 per lb.**

**PACIFIC COAST LAWN MIXTURE**—Climatic and soil conditions have much to do with the selection of varieties in lawn mixtures. This mixture is especially adapted to locations along the Coast and West of the Cascade Mountain range. It contains varieties which will respond in soils which are somewhat acid due to heavy winter rains. It is a very good mixture made from high grade grasses. It does not contain any rye grasses. It makes a hardy, fine-bladed turf well suited to the average soil. If white clover is desired in the mixture please specify when ordering. **Postpaid. Lb. \$1.35. Not prepaid, 5 lbs. or more @ \$1.30 per lb.**

**SWEET SOIL LAWN MIXTURE**—We have become convinced of the advantage of having a high grade mixture of lawn grasses for soils that are sweet or rather alkaline. We offer here a good mixture of fine bladed grasses which will respond in this type of soil. We secure the best success where the grass varieties are suited to the climate and soil. **Postpaid. Lb. \$1.25. Not prepaid, 5 lbs. or more @ \$1.25 per lb.**

**CREEPING FESCUE**—Rich, fine bladed foliage, making a splendid turf for shade or sun. Especially suited to sandy soils, banks, and terraces. One of our finest grasses. Many very fine lawns have been seeded with this alone and give splendid satisfaction. **Postpaid. Lb. \$1.30. Not prepaid, 5 lbs. @ \$1.25 per lb.**

**BLUE GRASS and WHITE CLOVER**—Well proportioned mixture. **Postpaid. Lb. \$1.30. Not prepaid, 5 lbs. @ \$1.25 lb.**

**CHEWING'S FESCUE**—Extensively used for lawns and golf courses. It makes a fine, close turf, very resistant to tramping. **Postpaid. Lb. \$1.30. Not prepaid, 5 lbs. @ \$1.25 per lb.**

**ASTORIA BENT (Blue Tag Grade)**—A native acclimated sort grown in Oregon. Besides creeping on the surface of the soil it has jointed roots that creep under ground. It is the best bent grass for high, well-drained soils and is very resistant to drought. It is often found growing in almost pure sand. It makes a thick, close turf, with fine leaf blades. **Postpaid. Lb. \$1.65. Not prepaid, 5 lbs. or more @ \$1.60 per lb.**

**SEASIDE BENT (Blue Tag Grade)**—A native, acclimated variety, largely grown in Coos County. It creeps on the surface of the ground. **Postpaid. Lb. \$1.65. Not prepaid, 5 lbs. @ \$1.60 per lb.**

**KENTUCKY BLUE GRASS**—A splendid general purpose grass for lawns, with hardy growth and fine, close turf. 24 lbs. per bushel grade. It does best on sweet soil. **Postpaid. Lb. \$1.30. Not prepaid, 5 lbs. @ \$1.25 per lb.**

**WHITE CLOVER**—Often used for lawns. We offer a fancy grade of seed for this purpose. **Postpaid. Lb. \$1.55. Not prepaid, 5 lbs. @ \$1.50 per lb.**

**POA TRIVIALIS**—Valuable lawn grass for shaded locations. In appearance it resembles Blue Grass. **Postpaid. Lb. \$1.35. Not prepaid, 5 lbs. @ \$1.30 per lb.**

## Power and Hand Lawn Mowers

We are agents for the JACOBSEN MOWERS. Write for prices.

## Canadian Peat Moss

(HORTICULTURAL)

Bales (about 100 lbs.), \$4.00 each. Not prepaid. Give shipping instructions. Write for quantity prices. Carton containing about 2 bushels when loosened, \$2.25 each. **Postpaid.** Beyond 4th zone additional postage required.

We specialize in high grade lawn grasses. You cannot make a good lawn without high grade seed. For large quantities write for prices. Our bulletin on lawn culture will help you make or maintain your lawn. Free for asking.

# Tulip Bargain

**BARGAIN MIXED**— This mixture is made up mainly from named varieties which were grown in Oregon and Washington. The mixture is made from over 50 varieties. The size runs 1¼ to 1½ inches in diameter, large enough for nice blooms the first season. While the varieties are mainly late flowering types, such as Darwins and Cottage Tulips, it also includes early single and double types. Good healthy bulbs, sent **Postpaid**. Not less than a dozen for this offer. **Doz. 75c; 50 for \$2.65; 100 for \$4.75.**

## Perennial Flower Seed Collection

**10 Regular Packets worth \$1.55 for \$1.15. Postpaid.**

1 Pkt. Aquilegia, Short Spurred Purple.....	\$ .20
1 Pkt. Canterbury Bells, Cup & Saucer Mixed..	.10
1 Pkt. Geum, Mrs. Bradshaw .....	.25
1 Pkt. Gypsophila, Paniculata .....	.15
1 Pkt. Gaillardia, Dazzler .....	.15
1 Pkt. Hollyhock Chaters, Double Mixed.....	.10
1 Pkt. Poppies, Iceland Mixed.....	.15
1 Pkt. Sweet William (Biennial) Mammoth Mixed .....	.15
1 Pkt. Alyssum, Saxatile Compactum.....	.15
1 Pkt. Wallflower, Mammoth Double Mixed.....	.15
	<hr/>
	\$1.55

## Florist Gladiolus Offer

30 large size bulbs, 1¼ inches up, in a fine mixture, postpaid, for \$1.00. This mixture is made from named standard sorts and newer introductions unlabeled and comprises large flowering varieties, chosen so as to give a good range of color. Our own selection in mixture. These collections are put up in advance and cannot be divided to sell part of a collection. Postpaid, including 4th zone. Beyond 4th zone add 10c each collection. Ready Dec. 1st.

## Glorious Gladiolus Offer

45 medium size bulbs, 1 to 1¼ inches in diameter, in splendid mixture, postpaid, for \$1.00. These will make fine blooms the first season. You will be surprised at the value you receive. This offer enables everyone to have a fine gladiolus garden. Splendid value. These collections are put up in advance and cannot be divided to sell part of a collection. Postpaid, including 4th zone. Beyond 4th zone add 10c each collection. Ready Dec. 1st.

## Field Seeds

If you are interested in the Fall purchase of field seed we can supply you. Just ask for our price list on Field Seeds, always offered F.O.B. Portland, Oregon. We handle high grade field seeds.

# INDEX

## Bulbs and Root Divisions

	Page
Abyssinian Sword Lily .....	12
Agapanthus .....	12
Allium .....	12
Amaryllis .....	12
Anemones .....	12
Begonias .....	12
Bleeding Hearts .....	13
Bletilla Hyacinthina .....	13
Calla Lilies .....	13
Calochortus (Mariposa Tulip) .....	4
Chionodoxa .....	13
Colchicum or Autumn Crocus.....	4
Crocus .....	8
Daffodils (Narcissus Family) .....	1-3
Daisies .....	13
Day Lilies (Hemerocalis) .....	15
Eranthis Hyemalis (Winter Aconite).....	13
Erythroniums (Lambs Tongue) .....	13
Freesias .....	14
Galanthus or Snowdrop .....	8
Gerbera (Transvaal Daisy) .....	14
Gladiolus Nanus (Baby Glads).....	14
Hyacinths .....	4
Iris, Bearded .....	9-11
Iris, Dutch .....	14
Iris, English .....	14
Iris, Fairy .....	14
Iris, Japanese .....	14
Iris, Reticulata .....	15
Iris, Spuria (Root Iris) .....	15
Ixias .....	15
Leucojum, Snowflake .....	8
Lilies, Hardy .....	16-17
Lily of the Valley .....	15
Lily, Peruvian (Alstromeria) .....	15
Milla Fiflora .....	17
Montbretias .....	17
Muscari (Grape Hyacinths) .....	17
Ornithogalum .....	18
Oxalis .....	18
Peonies .....	18
Phlox, Hardy Plants .....	18-19
Ranunculus .....	19
Scillas .....	19
Sparaxis .....	19
Tigridia (Tiger Flower) .....	19
Trilliums .....	19
Tritelia (Star Flower) .....	19
Tritoma .....	19
Tuberoses .....	19
Tulips .....	5-8
Watsonias .....	19
Zephyranthus (Fairy Lily) .....	19

## Flower Seeds

See List .....	20-22
----------------	-------

## Miscellaneous

Collections, Special Offers .....	22 and 32
Fertilizers .....	26
Field Seeds .....	32
Garden Supplies .....	28-30
Gift Certificates .....	30
Lawn Grass .....	31
Mushroom Spawn .....	26
Peat Moss .....	31
Permatags .....	27
Power Mowers .....	31

## Plants and Sets

Asparagus Roots .....	27
Garlic .....	26
Onion Sets .....	27
Rhubarb .....	27
Roses .....	30
Strawberry Plants .....	28

## Vegetable Seeds

See List .....	23-26
----------------	-------

It is often best to send by Express where wanted quickly. Unless an R.F.D. is given or Express station is different from Postoffice we will sometimes send in that way.

# GILL BROS. SEED CO., Portland 16, Ore., Montavilla Station

Date..... Amount enclosed..... Date Rec.....

Send to (Name)..... Amt. Enclosed.....

Street..... R.F.D..... Box..... O. F. by.....

Post Office..... City Zone..... Checked by.....  
Packed by.....

State..... County..... Date sent.....

**OUR WARRANTY**—We give no warranty, expressed or implied, as to the productiveness of any seeds or bulbs we sell and we will not be in any way responsible for the crop. Our liability in all instances is limited to the purchase price of the seed.

✓	QUAN.	NAMES OF ARTICLES WANTED	PRICE	

**IMPORTANT NOTICE**—Be sure to send sufficient funds. If you are short we will reduce your order to the amount paid and advise you. If more than enough is sent, any balance will be refunded. Please read instructions about C.O.D. orders in our instructions, inside front cover.



From

---

---

GILL BROS. SEED CO.

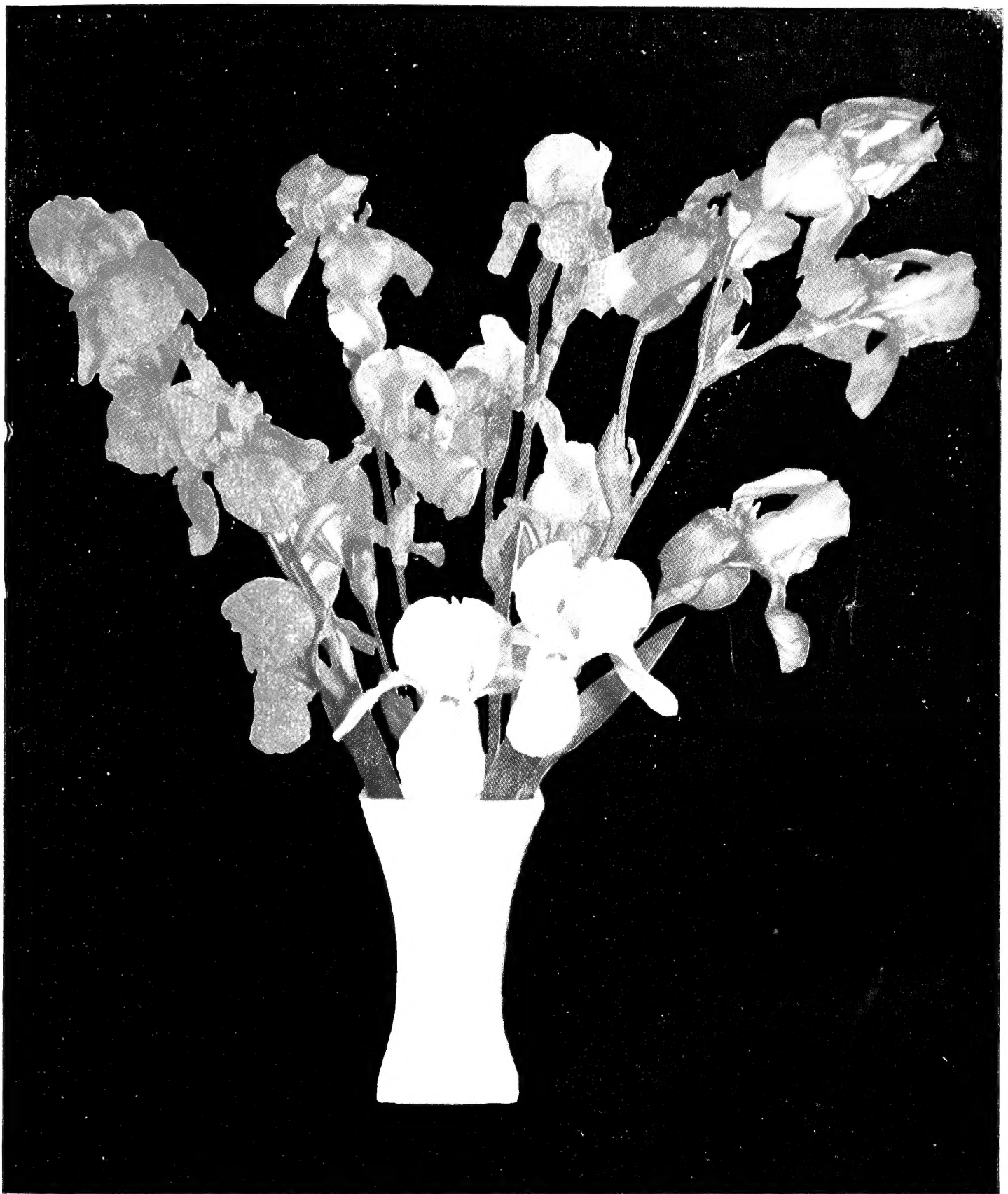
Portland 16,

Montavilla Station

Oregon

**Please be sure that your name and full address  
are written on your order.**





**GOLDEN MAJESTY**

**GREAT LAKES**

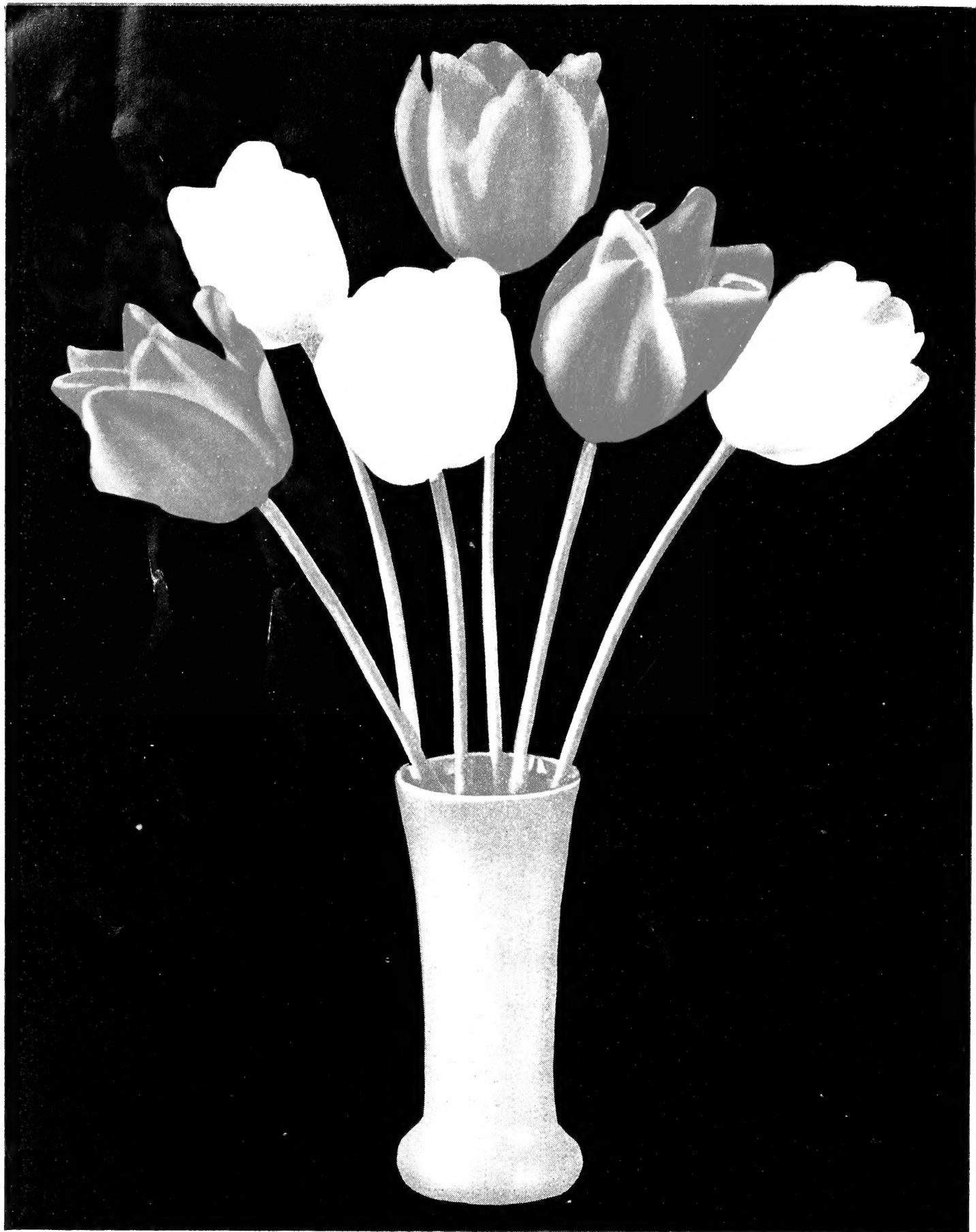
**FAIR ELAINE**

**MISS CALIFORNIA**

**MATTERHORN (White)**

## **Iris of Our Own Growing**

We specialize in high grade rhizomes of Bearded Iris. With two acres in these Iris, in up-to-date and standard varieties, we fill 95% of our orders of Bearded Iris from our own field. Our soil is ideal to produce good healthy plants. You may order any time for shipment at the proper season.



CLARA BUTT, Salmon Pink . . . KANSAS, White

**GILL BROS. Seed Co.**

*Fall Catalog 1951*